

SANTA BARBARA  
MUSEUM OF  
ART

BOOK NOW  
AND SAVE  
**\$1,000**  
OR MORE  
PER CABIN!  
call for details

# Castles & Campaigns

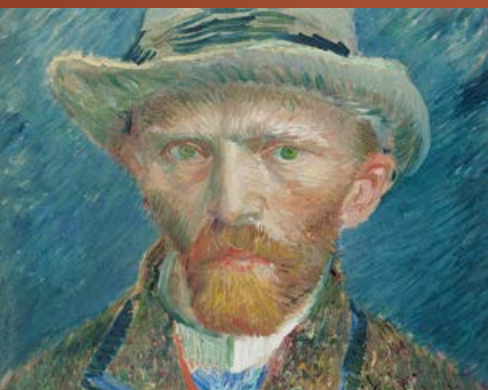
ABOARD THE *Sea Cloud II*

**JUNE 10-18, 2016**



**FRANCE + ENGLAND + BELGIUM + NETHERLANDS + GERMANY**

FEATURING **LUCINDA HAWKSLEY**, AUTHOR AND HISTORIAN





## DEAR MEMBERS AND FRIENDS,

**E**XPLORE the major historical events that swept across the map of Northern Europe from the 19th century to World War II, and the cultural climate that gave them context, aboard the *Sea Cloud II*, one of the most elegant and luxurious vessels afloat. Excursion options allow travelers to focus on their personal area of interest, whether it is the political, military, and human drama of historic battle sites or renowned country estates and world-class art collections.

After arriving in Paris, embark the *Sea Cloud II* in the picturesque Seine River port of Honfleur and sail across the English Channel to Portsmouth and Dover, where excursion choices include 17th-century Petworth House, famous for its extensive art collection; Portsmouth's award-winning D-Day Museum and historic dockyards; Dover Castle's secret war tunnels; and impressive Leeds Castle. Continue to the Low Countries of Belgium—for a day in gorgeous medieval Bruges or an excursion to Ypres, strategically important in WWI—and the Netherlands, where the cultural and horticultural treasures of Amsterdam, Aalsmeer, and Haarlem vie for your attention. Disembark in Hamburg for return flights home. A pre-trip optional extension in Normandy includes an opportunity to see the incomparable Bayeux Tapestry and visits to sites related to D-Day and the Battle of Normandy.

A voyage aboard the *Sea Cloud II*, which carries only 94 passengers, is an unfailingly memorable experience. Museum travelers will share this exclusive charter with travelers from Yale, Princeton, and the National Trust for Historic Preservation, so I encourage you to reserve your space today on this late spring exploration of Northern Europe.

Sincerely,



Lisa Hill  
Manager of Travel & Special Programs  
Santa Barbara Museum of Art



For information or to reserve space, please contact the Santa Barbara Museum of Art at (805) 884-6436 or [travel@sbma.net](mailto:travel@sbma.net).



Explore significant cultural icons and historic military events of Northern Europe with visits to the beautiful medieval center of Bruges and the Tyne Cot Commonwealth War Graves Cemetery at Ypres (**COVER**), Leeds Castle in Kent, England, once the residence of Henry VIII's first wife, Catherine of Aragon (**THIS PAGE**); and Haarlem (**BACK COVER**), home of the Teylers Museum, the oldest museum in the Netherlands.



# Study Leaders



**LUCINDA HAWKSLEY** is an author and art historian who teaches art history and literature to

American undergraduates in London. She is a regular guest speaker at the National Portrait Gallery in London and has also been a guest lecturer at a number of institutions in the United States and abroad. A direct descendant of Charles and Catherine Dickens, she is a patron of the Charles Dickens Museum in London, has lectured about her family history all over the world, and, for the past seven years, has been the guest of honor at the Dickens on the Strand festival in Texas.



**JAY WINTER** is the Charles J. Stille Professor of History at Yale University. A member of the Yale faculty since

2001, he is the author of *Sites of Memory*, *Sites of Mourning: The Great War in European Cultural History*, and co-directed the collective that produced *Capital Cities at War: Paris, London, Berlin 1914-1919*. He won an Emmy as co-producer, writer, and chief historian of the BBC and PBS series "The Great War and the Shaping of the Twentieth Century," first broadcast in 1996 and shown in 27 countries. Professor Winter looks forward to sharing insights on France in the 20th century and after.



**COLONEL KEVIN J. WEDDLE, Ret.**, Professor of Military Theory and Strategy at the United States Army

War College, is a veteran of Operations Desert Storm and Enduring Freedom. Col. Weddle has led groups of visitors to the significant battlefields and beachheads of World Wars I and II, as well as to crucial sites in centuries-earlier campaigns, such as Waterloo and Agincourt. He received his PhD from Princeton in history in 2003 and is the author of *Lincoln's Tragic Admiral: The Life of Samuel Francis Du Pont*.





WWI TRENCHES,  
BELGIUM



AMSTERDAM



## HIGHLIGHTS

Enjoy seven nights aboard the beautiful three-masted *Sea Cloud II*, which offers the seafaring elegance of a bygone era combined with the highest modern standards of luxury.

Visit 17th-century **Petworth House**, whose extensive art collections include paintings by Turner and Van Dyck and carvings by Grinling Gibbons and Ben Harms.

Customize your time ashore with a choice of excursions in each port by selecting a theme—military history, or culture and art—and the excursions that focus on that theme.

Experience the thrill of being under sail on the magnificent *Sea Cloud II*, with 30,000 square feet of canvas billowing overhead (weather permitting), as you cruise from Honfleur to Hamburg.

Learn the personal stories behind historic military events of the 19th and 20th centuries, explore the lives of the upper classes at renowned castles, and visit artistic masterpieces in a variety of fascinating museums.

## Itinerary

Friday & Saturday, June 10 & 11

**HOME / PARIS, FRANCE / HONFLEUR**

Depart on an overnight flight to Paris and transfer to Honfleur, where the *Sea Cloud II* is docked. Embark and enjoy a welcome reception and dinner. *SEA CLOUD II* (R,D)

Sunday, June 12

**PORTSMOUTH, U.K.**

**OPTION 1:** Enjoy a guided tour of Petworth House, a 17th-century country estate renowned for its art collection and expansive park, landscaped by Capability Brown and home to the largest herd of fallow deer in England.

**OPTION 2:** Delve into Portsmouth's fascinating military history, with an early entry to the award-winning D-Day Museum, an exclusive visit to the historic map room at Southwick Park (Gen. Eisenhower's D-Day headquarters), and free time to explore the Portsmouth Historic Dockyard (featuring the Royal Naval Museum and some of the most iconic ships in British maritime history—the *Mary Rose*, the *HMS Victory*, and the *HMS Warrior*).

*SEA CLOUD II* (B,L,D)

Monday, June 13

**DOVER**

**OPTION 1:** Visit Leeds Castle, one of England's most picturesque and historic castles, situated on a raised island in the middle of a lake formed by the River Len, and used by Henry VIII as a residence for his first wife, Catherine of Aragon.

**OPTION 2:** Explore the secret war tunnels at Dover Castle, where the World War II Dunkirk evacuation was planned. An afternoon at sea provides your first opportunity, weather permitting, to experience the *Sea Cloud II* under sail.

*SEA CLOUD II* (B,L,D)

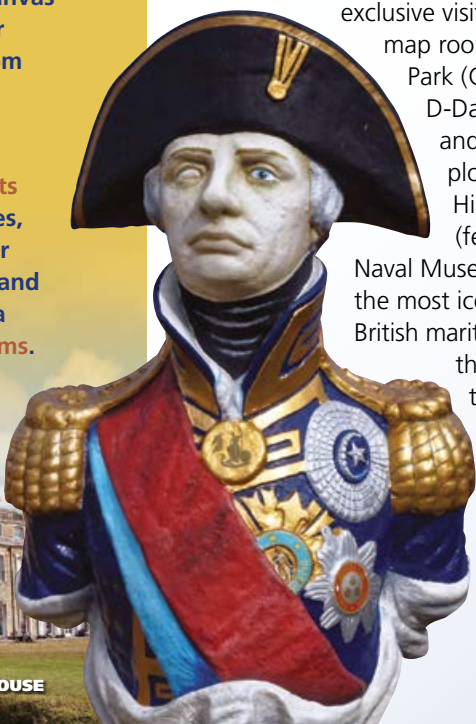
Tuesday, June 14

**OSTEND, BELGIUM**

Dock in Ostend for a full-day in either Bruges or Dunkirk and Ypres.

**OPTION 1:** Bruges, capital of the province of West Flanders, is renowned for the beautiful medieval architecture of its historic center, a UNESCO World Heritage site. A walking tour of this charming area includes the art treasures of the Church of Our Lady and the small but prized Groeninge and Memling museums (those who prefer can instead participate in a chocolate-making workshop in Bruges at an additional cost of \$70 per person).

**OPTION 2:** Visit the museums, cemeteries, and battle sites around Dunkirk, where Allied troops were evacuated as part of Operation Dynamo during World War II, and Ypres, immortalized in the poem "In Flanders Fields." Written during World War I by Canadian physician Lt. Col. John



STATUE OF  
ADM. NELSON,  
PORTSMOUTH



PETWORTH HOUSE





BELGIAN CHOCOLATES



RIJKSMUSEUM

McCrae, the poem honors the memory of McCrae's friend and fellow soldier Alexis Helmer, who died in the Second Battle of Ypres. *SEA CLOUD II* (B,L,D)

**Wednesday, June 15**

**AT SEA / AMSTERDAM, NETHERLANDS**

After a morning of cruising, arrive in Amsterdam for an afternoon visit to the Rijksmuseum, a Netherlands national museum dedicated to art and history, including masterpieces by Rembrandt, Frans Hals, and Johannes Vermeer. In the early evening, enjoy a private cruise along Amsterdam's medieval and colonial age canals, the result of conscious city planning in the 17th century. *SEA CLOUD II* (B,L,D)

**Thursday, June 16**

**AMSTERDAM**

**OPTION 1:** Visit the Van Gogh Museum and the Anne Frank House (including a special guest speaker from the Anne Frank Foundation) and, after lunch on the ship, enjoy an afternoon at leisure in Amsterdam.  
**OPTION 2:** At an additional cost of \$110 per person, enjoy a full-day excursion to the flower auction in Aalsmeer and the Frans



BAYEUX TAPESTRY

Hals and Teylers museums in Haarlem, with a private tour of the drawings collections not open to the public at the latter, and lunch at a local restaurant in Haarlem.

*SEA CLOUD II* (B,L,D)

**Friday, June 17**

**AT SEA**

After a full day of cruising to Hamburg (weather permitting, a portion of the cruise will be under sail), this evening enjoy a farewell reception and dinner on board.

*SEA CLOUD II* (B,L,D)

**Saturday, June 18**

**HAMBURG, GERMANY / HOME**

Disembark in Hamburg and transfer to the airport for flights home. (B)



*Optional Pre-Trip Extension*

**NORMANDY**  
*June 6–11, 2016*

This four-night extension offers an in-depth look at sites where some of the most decisive and fiercely contested battles of World War II took place. After one night in Paris, transfer to the charming Château d'Audrieu near Bayeux, Normandy. Activities include, among others, the Peace Memorial Museum in Caen; the Airborne Museum in Ste-Mère-Eglise; Pointe du Hoc, a strategic promontory overlooking the English Channel that Allied troops captured from the Germans; the American Military Cemetery at St-Laurent-sur-Mer overlooking Omaha Beach; a memorial flag ceremony; the D-Day Landing Museum in Arromanches; and the Bayeux Tapestry Museum. (4B,4L,4D)

**RATES:**  
 \$3,490 per person, double occupancy  
 \$4,490 per person, single occupancy



POINTE DU HOC





CATEGORY 6 CABIN

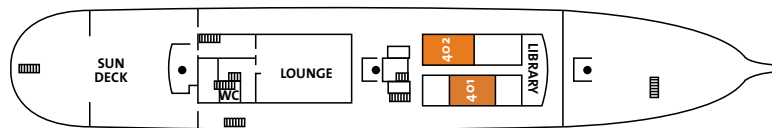


CATEGORY 5 CABIN

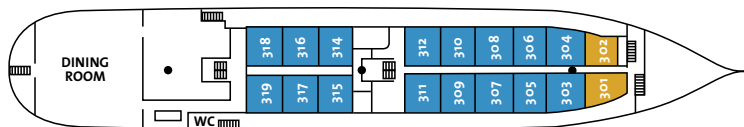


# Sea Cloud II

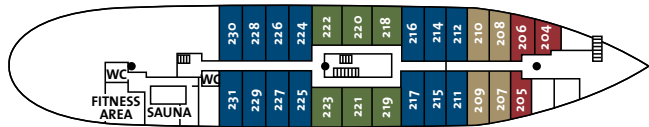
Christened in 2001, the *Sea Cloud II* is perhaps the most luxurious three-masted sailing yacht on the seas today. The sister ship of Marjorie Merriweather Post's legendary *Sea Cloud*, she combines the seafaring elegance of a bygone era with the highest modern standards of luxury. In the grand tradition of the world's finest sailing vessels, guests experience this marvelous ship under sail (weather permitting), as the skilled crew hand-sets more than 30,000 square feet of canvas. The *Sea Cloud II* offers an intimate setting of just 47 beautifully appointed cabins, gracious common areas, world-class service, and five-star dining.



LIDO DECK (Category 7)



PROMENADE DECK (Categories 5-6)



CABIN DECK (Categories 1-4)

## PROGRAM RATES, per person

CATEGORY	DOUBLE	SINGLE	CATEGORY	DOUBLE	SINGLE
<b>1</b>	\$5,495	\$5,995	\$8,995		
129 sq. ft., upper & lower twin beds, 2 portholes, shower					
<b>2</b>	\$7,495	\$7,995	\$11,995		
172 sq. ft., forward, twin beds*, 2 portholes, shower					
<b>3</b>	\$8,495	\$8,995	\$13,495		
172 sq. ft., midship, twin beds*, 2 portholes, shower					
<b>4</b>	\$9,495	\$9,995	—		
204 sq. ft., twin beds*, 2 portholes, shower					
<b>5</b>	\$10,495	\$10,995	—		
204 sq. ft., queen bed*, panorama windows, shower					
<b>6</b>	\$12,495	\$12,995	—		
247 sq. ft., twin beds*, panorama window, bathtub/shower combo					
<b>7</b>	\$14,495	\$14,995	—		
290 sq. ft., king bed*, panorama window, bathtub, separate shower					

*Singles pay the double rate!*

\*In categories 2, 3, 4, and 6, twin beds can be kept separate or pushed together to form one larger bed, with the exception of cabins 224 and 226, where beds are fixed together as one larger bed. Note that queen and king beds in categories 5 and 7 are made up of two mattresses, side-by-side.

## PROGRAM RATES INCLUDE

- All accommodations, meals, and excursions as specified in the itinerary, including a 7-night cruise aboard the *Sea Cloud II*
- Comprehensive program of briefings, lectures, and presentations
- Complementary transfers for all participants on group arrival and departure days
- Baggage handling at hotels and ship
- Gratuities to porters, waitstaff, guides, drivers, and shipboard personnel
- Port charges
- Entrance fees
- Welcome and farewell receptions
- House wine, beer, and soft drinks with all group lunches and dinners
- Bottled water on motorcoaches
- Complete packet of pre-departure information including educational materials
- Professional tour manager throughout the program

## AIR ARRANGEMENTS

U.S. domestic and international airfare is not included in the program rates. Round-trip economy-class airfare from New York to Paris with return from Hamburg is approximately \$1,375 as of June 2015 and is subject to change without notice. Information about making flight arrangements will be sent to all participants.

## WHAT TO EXPECT

This is a moderately strenuous program, at times physically demanding and busy, with

considerable walking at some sites. Daily activities can involve up to two miles of walking, often on cobbled streets and uneven terrain, or up and down hills, and may include extended periods of standing in museums and churches. Often elevators are unavailable and stairs may not have handrails. Participants should be fit and in active good health. Limited medical facilities are available on board the *Sea Cloud II*. By forwarding the deposit for passage, the participant certifies that s/he does not have any physical or other limitation that would create a hazard for her/himself or other travelers.

## FUEL COSTS

Program rates are based upon the prevailing fuel rates at the time of brochure printing. While we will do everything possible to maintain the published rates, if fuel costs increase significantly, it may be necessary to institute a fuel surcharge. In that case, we will notify participants in advance of departure.

## PHOTO CREDITS

(From Dreamstime.com): BRUGES © Rob Van Esch; YPRES CEMETERY © Chris Dorney; LEEDS CASTLE © Keith Wheatley; WWI TRENCHES © Mark Eaton; AMSTERDAM © Palex66; ADM. NELSON STATUE © Photonics; BELGIAN CHOCOLATES © Yunusoglu; POINTE DU HOC © Guy Rouget; FRANS HALS STATUE © Timurk; HAARLEM © Giancarlo Liguori. (From Wikimedia Commons): RIJKSMUSEUM © Velvet; PETWORTH HOUSE © Lukem; BAYEUX TAPESTRY © Serge Lachinov. VAN GOGH SELF-PORTRAIT courtesy of Rijksmuseum Catalogue.

## GENERAL INFORMATION

### PROGRAM RATES DO NOT INCLUDE

- U.S. domestic and international airfare
- Passport and visa fees
- Medical expenses and immunizations
- Meals and beverages other than those specified as included
- Cost of chocolate-making workshop on June 14 (\$70 per person) and Aalsmeer/Haarlem excursion on June 16 (\$110 per person)
- Deviations from the scheduled tour
- Dishes and beverages not part of the included meals
- Liquor except as otherwise indicated in Inclusions
- Excess-baggage charges
- Trip-cancellation/baggage insurance
- Independent airport transfers
- Laundry, room service, telephone/email/fax charges, and other items of a personal nature

### INSURANCE

We strongly recommend the purchase of trip cancellation insurance, which is available for coverage of expenses in conjunction with cancellation due to illness or accident. Baggage insurance is also recommended. In the event that you must cancel your participation in a travel program, trip cancellation insurance may be the only source of reimbursement.

### GROUP SIZE

This program is limited to 76 participants, including travelers from the Santa Barbara Museum of Art, the National Trust for Historic Preservation, Yale, and Princeton.

## TERMS & CONDITIONS

Complete Terms & Conditions will be sent to participants upon confirmation and are available to prospective travelers upon request. As a condition of participation, each passenger will be required to sign a Release of Liability, which will be sent along with the Terms & Conditions.

### RESERVATIONS & PAYMENTS

A deposit of \$1,000 per person is required to reserve space on this program. You may complete the

reservation form included in this brochure and mail it with your check or credit card information to Santa Barbara Museum of Art, 1130 State Street, Santa Barbara, CA 93101-2746. Or you may fax the completed reservation form to (805) 966-6840. If you have questions, please call (805) 884-6436 or email [travel@sbma.net](mailto:travel@sbma.net). Final payment deadline is February 11, 2016. For those who register after February 11, 2016, full payment is due upon registration.

### CANCELLATIONS & REFUNDS

Upon payment of the \$1,000 per person deposit, all reservations are subject to the cancellation provisions set forth below and by which the passenger agrees to be bound. Cancellations shall not be in effect until they are received in writing and confirmed by the Santa Barbara Museum of Art. Deposits are refundable (less a \$250 per person administration fee) if written notice of cancellation is received within 30 days of reservation; after that, deposits are 100% nonrefundable. Final payment is due February 11, 2016 (120 days prior to departure). Cancellations within 120 days are nonrefundable. Trip cancellation insurance is strongly recommended. Note: Neither the Santa Barbara Museum of Art nor Criterion Travel, the tour operator, accepts liability for any airline cancellation penalties incurred with the purchase of nonrefundable tickets.



FRANS HALS STATUE,  
RIJKSMUSEUM

# Castles & Campaigns

ABOARD THE SEA CLOUD II JUNE 10-18, 2016

## RESERVATION FORM

To reserve a place, please complete and return this form with your deposit of \$1,000 per person, payable to Santa Barbara Museum of Art, to: Santa Barbara Museum of Art, 1130 State Street, Santa Barbara, CA 93101-2746. Or fax the form to (805) 966-6840.

### PAYMENT

- Enclosed is my check for \$ \_\_\_\_\_ (\$1,000 per person, payable to Santa Barbara Museum of Art), to reserve \_\_\_\_\_ place(s) on *Castles & Campaigns* OR
- Please charge my deposit of \$ \_\_\_\_\_ (\$1,000 per person to my:  VISA  MasterCard  AmEx  Discover

CREDIT CARD NUMBER \_\_\_\_\_ EXP. DATE \_\_\_\_\_

CARDHOLDER SIGNATURE \_\_\_\_\_ SEC. CODE \_\_\_\_\_

I/we understand that final payment is due February 11, 2016, 120 days prior to departure. Registrations after February 11, 2016: full payment is due.

NAME #1 (AS ON PASSPORT) \_\_\_\_\_ DATE OF BIRTH \_\_\_\_\_

NAME #2 (AS ON PASSPORT) \_\_\_\_\_ DATE OF BIRTH \_\_\_\_\_

STREET ADDRESS \_\_\_\_\_

CITY / STATE / ZIP \_\_\_\_\_

HOME PHONE \_\_\_\_\_ WORK PHONE \_\_\_\_\_

FAX \_\_\_\_\_ EMAIL \_\_\_\_\_

### SINGLE TRAVELERS

If this is a reservation for one person, please indicate:

- I prefer to have single accommodations.
- I plan to share accommodations with \_\_\_\_\_
- I'd like to know about roommates. I am a  Non-smoker /  Smoker.

*I understand that if a roommate cannot be found by the final payment deadline of February 11, 2016, I will pay the single rate.*

### ACCOMMODATIONS

Cabin category preference: 1st \_\_\_\_\_ 2nd \_\_\_\_\_

Preferred bed configuration:  King/Queen  Twins

I/we have read the tour information and agree to the Terms & Conditions therein.

SIGNATURE \_\_\_\_\_ DATE \_\_\_\_\_

SIGNATURE \_\_\_\_\_ DATE \_\_\_\_\_





Santa Barbara Museum of Art  
1130 State Street  
Santa Barbara, CA 93101-2746

PRSR STD  
U.S. Postage  
Paid  
Permit No. 604  
Sacramento, CA

BOOK NOW  
AND SAVE  
**\$1,000**  
OR MORE  
PER CABIN!  
call for details



# Castles & Campaigns

ABOARD THE *Sea Cloud II* **JUNE 10-18, 2016**

**FRANCE + ENGLAND + BELGIUM + NETHERLANDS + GERMANY**

FEATURING **LUCINDA HAWKSLEY**, AUTHOR AND HISTORIAN