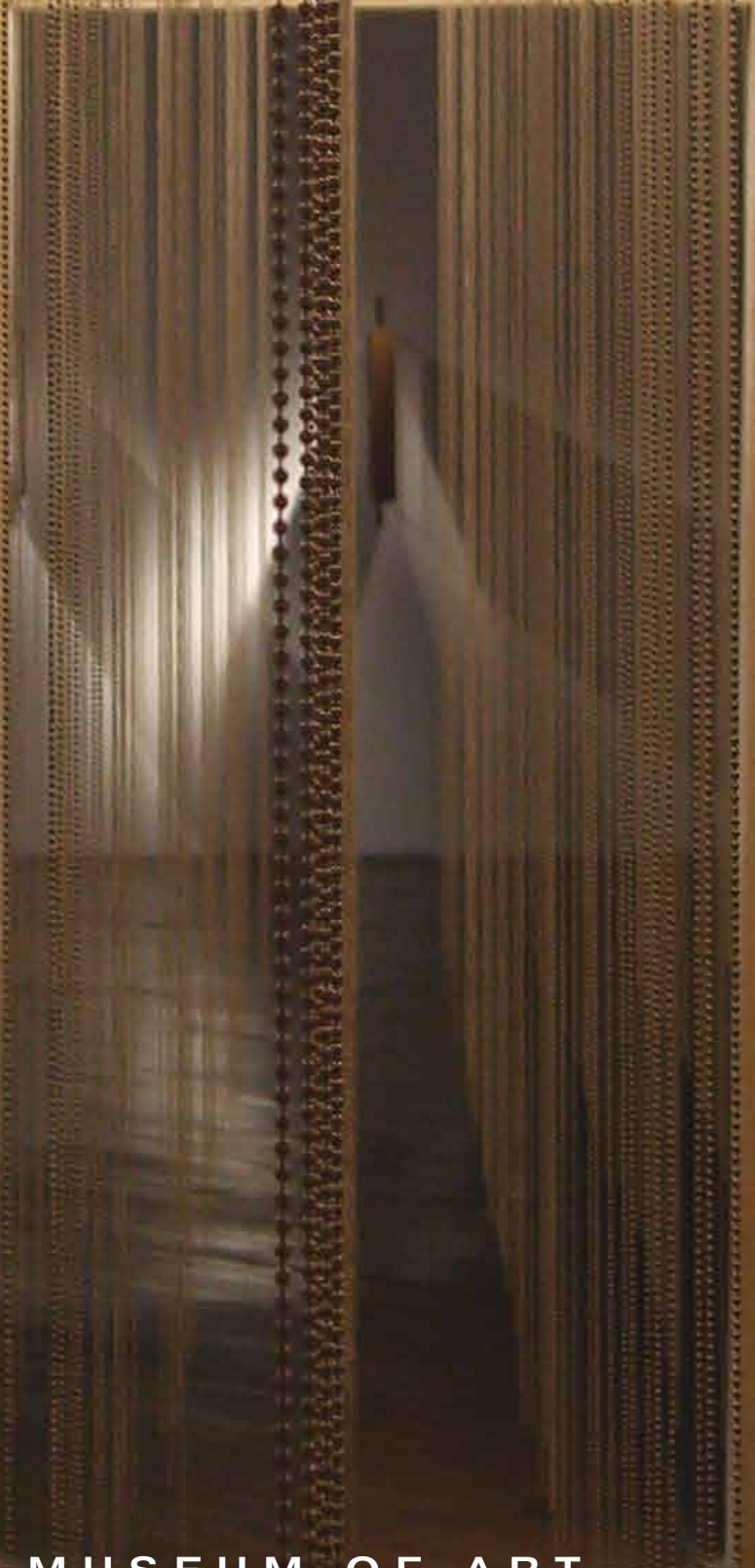


■ oct | nov | dec | 2017



SANTA BARBARA MUSEUM OF ART



Dear Members,

The SBMA galleries are alive and vibrant with the monumental installation of the major exhibition *Valeska Soares: Any Moment Now* as part of the Getty Foundation initiative Pacific Standard Time: LA/LA, a far-reaching and ambitious exploration of Latin American and Latino art in dialogue with Los Angeles taking place from September 2017 through January 2018. The Santa Barbara Museum of Art joins more than 70 other cultural institutions across Southern California, featuring exhibitions and programming that highlight art from the ancient world to the present day.

With a very successful opening on September 17 behind us, we look forward to a variety of programming that brings further thought to and understanding of the art of Valeska Soares. Included in the fall line-up is a Parallel Stories event with noted author, essayist, and commentator Richard Rodriguez, a Latin American film series, a lecture by Tanya Barson, Chief Curator of the Museu d’Art Contemporani de Barcelona, and culminating with a special Santa Barbara-based PST: LA/LA celebration from October 20 to 22. More information on all of the related programming can be found on page 6.

In many of the programs and festivities, SBMA is partnering with other Santa Barbara-based organizations that are participating in PST: LA/LA in order to reach the entire community and beyond—Santa Barbara will become a major destination for Pacific Standard Time: LA/LA goes. For a list of all exhibitions and programming in the area, please visit [www.sbma.net/pstsb](http://www.sbma.net/pstsb).

Despite the ongoing, major renovation, the Museum continues to be a dynamic venue for arts and culture for its Members and visitors—with a range of exhibitions and myriad events, some literary, musical, and theatrical. Please peruse the calendar in the center spread. We hope to see you here soon.

Sincerely,



Larry J. Feinberg  
Robert and Mercedes Eichholz Director and CEO



2017 – 2018 Board of Trustees

John C. Bishop, Jr., <i>Chair</i>	Elaine Gray
Patricia Aoyama, <i>Vice Chair</i>	Perri Harcourt
Betsy Hannaford, <i>Vice Chair</i>	Christine Vanderbilt Holland
Clay Tedeschi, <i>Secretary</i>	Gina Jannotta
Ken Anderson	Jacquelyn Klein-Brown
Gwen Baker	Judith Little
Patricia Blake	Paul Longanbach
Dan Cerf	Bob Marshall
Les Charles	Françoise Park
John Mike Cohen	Michael Patrick Porter
Joan Davidson	George Schoellkopf
Jane Eagleton	Diane Sullivan
Lois Erburu	Jeanne Towles
Audrey Hillman Fisher	Sarah Vedder
Connie Frank	Michael G. Wilson
John Gardner	Bruce Worster
David Gersh	

Larry J. Feinberg,  
*Robert and Mercedes Eichholz Director and Chief Executive Officer*  
James Hutchinson, *Chief Financial Officer*



Valeska Soares: Any Moment Now

September 17 – December 31, 2017  
Davidson, Preston Morton, Colefax, Von Romberg, Emmons, Thayer,  
and Ludington Court Galleries

SBMA’s major exhibition *Valeska Soares: Any Moment Now* opened with great success in mid-September, coinciding with over 70 other projects that make up the Getty’s landmark initiative Pacific Standard Time: LA/LA. This far-reaching and ambitious exploration of Latin American and Latino art offers thematically linked exhibitions, programs, and events throughout Southern California for a limited time (visit [www.pacificstandardtime.org](http://www.pacificstandardtime.org) for more information). SBMA’s exhibition crosses over thematically with several projects within the initiative, including, for instance, *Radical Women: Latin American Art, 1960–1985* at the Hammer Museum (UCLA) with the work of Teresinha Soares, Valeska’s mother, who was the focus of a major survey exhibition at the Museu de Arte de São Paulo last summer; or *Anna Maria Maiolino* at the Museum of Contemporary Art, Los Angeles, featuring installations by an artist who is part of a generation that began exhibiting in Brazil in the 1960s.

Santa Barbara is host to several PST: LA/LA exhibitions and has provided the occasion for an unprecedented collaboration between local institutions to present a special Santa Barbara Weekend—a series of special events and programs taking place October 20–22. Organized by the Santa Barbara Museum of Art, the Museum of Contemporary Art Santa Barbara, the Art, Design & Architecture Museum at UC Santa Barbara, and the Santa Barbara Historical Museum, with additional venues at Westmont Ridley-Tree Museum of Art and Community Arts Workshop, the aim of this weekend is to bring attention to Latin American and Latino art and also to provide opportunities for the local community to connect, learn, and be inspired by the art and ideas presented in these exhibitions. All information pertaining to PST: LA/LA in Santa Barbara can be found at [www.sbma.net/pstsb](http://www.sbma.net/pstsb).

During this special weekend, SBMA presents a wide variety of programs, including Sensory Studio, an interactive public installation for all ages; and a lecture by internationally accomplished curator Jens Hoffmann (Senior Curator at the Museum of Contemporary Art Detroit and Director of Special Exhibitions and Public Programs, Jewish Museum, NY), who has included Valeska Soares’ work in at least two of his exhibitions during the past two years (see page 6 for more details).

Related to several Santa Barbara exhibitions is also a Latin American Film Series titled *Unrest, Distance, and the Future*, organized by SBMA and curated by UCSB Professor of Film and Media Studies, Cristina Venegas (see page 6 for details). The aim of this program is not only to complement but also to examine the themes of Pacific Standard Time: LA/LA through alternative media, revealing their ubiquity in our everyday lives. The series particularly relates to three of the Santa Barbara based exhibitions: *Valeska Soares: Any Moment Now* (SBMA); *Guatemala from 33,000 km: Contemporary Art, 1960 – Present* (MCASB); and *The Schoolhouse and the Bus: Mobility, Pedagogy, and Engagement, Two Projects by Pablo Helguera and Suzanne Lacy / Pilar Riaño-Alcalá* (AD&A Museum). Each of the films speaks to speculative futures and spaces, irrevocable pasts, gender perspectives, and living with fear as a condition of contemporary life. Lastly, SBMA presents a lecture by Tanya Barson, Chief Curator of the Museu d’Art Contemporani de Barcelona, who will speak on the work of Valeska Soares and touch upon exhibitions she has organized for the artists Georgia O’Keeffe, Mira Schendel, and Frida Kahlo (see page 6 for details).



Top: Valeska Soares, *The Scarlet Letter (from Bindings)*, 2011.  
Top right: Valeska Soares, *Finale*, 2013.  
Bottom right: Valeska Soares, *Un-rest*, 2010.



Valeska Soares: *Any Moment Now*, continued

SBMA App

SBMA's mobile app has been updated to include observations by scholars from an array of disciplines (Literature, Gender Studies, Spanish and Portuguese, Critical Theory, and Creative Writing) on the work of Valeska Soares. Visitors to the exhibition are able to listen to the input of writers, scholars, artists, and curators while viewing the artwork: scholars such as Professor Jon Snyder, Department of Italian Studies at UCSB; Professor Lucia Re, Department of Italian and Gender Studies at UCLA; Suzanne Jill Levine, Professor of Spanish, Portuguese, and Translation Studies at UCSB; Andrew Winer, Chair of Creative Writing Program at UC Riverside; and lastly, Colin Gardner, Professor of Critical Theory and Integrative Studies at UCSB. Other prominent voices include curator Jens Hoffmann; co-curator of the exhibition, Vanessa Davidson from the Phoenix Art Museum; and the artist herself, Valeska Soares. This is part of SBMA's objective to diversify the voices that speak on contemporary art, supporting the accessibility of art and artists in the 21st century.

Download the app for free or view the web version at [www.sbma.net/app](http://www.sbma.net/app).



About Pacific Standard Time: LA/LA

Pacific Standard Time: LA/LA is a far-reaching and ambitious exploration of Latin American and Latino art in dialogue with Los Angeles taking place from September 2017 through January 2018. Led by the Getty, Pacific Standard Time: LA/LA is a collaboration of arts institutions across Southern California that, through a series of thematically linked exhibitions and programs, highlights different aspects of Latin American and Latino art from the ancient world to the present day. Initiated through \$16 million in grants from the Getty Foundation, Pacific Standard Time: LA/LA involves more than 70 cultural institutions from Los Angeles to Palm Springs, and from San Diego to Santa Barbara. For further information, visit [www.pacificstandardtime.org](http://www.pacificstandardtime.org).

Pacific Standard Time: LA/LA brings a unique opportunity specifically to Santa Barbara, encouraging cross-cultural dialogue and critical investigation of Latin American art in a local context:

Exhibitions include:

**Valeska Soares: *Any Moment Now*** at the Santa Barbara Museum of Art  
September 17 – December 31, 2017

**Guatemala from 33,000 km: Contemporary Art, 1960 – Present** at the Museum of Contemporary Art Santa Barbara, Westmont Ridley-Tree Museum of Art, and the Community Arts Workshop  
September 17 – December 17, 2017

**The Schoolhouse and the Bus: Mobility, Pedagogy, and Engagement, Two Projects by Pablo Helguera and Suzanne Lacy / Pilar Riaño-Alcalá** at the Art, Design & Architecture Museum at UC Santa Barbara  
September 27 – December 8, 2017

**Sacred Art in the Age of Contact: Chumash and Latin American Traditions in Santa Barbara** at the Art, Design & Architecture Museum at UC Santa Barbara, September 16 – December 8, 2017 and Santa Barbara Historical Museum  
September 15, 2017 – January 14, 2018

For related programming for all Santa Barbara-based exhibitions, visit [www.sbma.net/pstsb](http://www.sbma.net/pstsb).



Story-Telling: Narrative Paintings in Asian Art

Opens October 1, 2017  
Ridley-Tree Gallery

Pictures that tell stories serve as powerful vehicles to illuminate important events, promote cultural and religious values, or express personal views. This exhibition features eight narrative paintings from China, Japan, India, and Tibet, showcasing the diversity of the format and expressive versatility of these Asian cultures. Dating from the 17th through 19th centuries, the paintings offer a variety of distinct approaches to pictorial storytelling. This includes, among others, examples of continuous narration within a single frame, a handscroll annotated with extensive text, and a monumental textile panel comprised of dozens of successive scenes. The exhibition is drawn from the Museum's permanent collection with loans from local collectors, and coincides with the contemporary survey *Valeska Soares: Any Moment Now*, exploring Soares' experimentation with temporality, narrative, and memory.

Top: *Dawn in the Geisha Quarters*, Japanese, mid-17th century. Ink and color on paper; hanging scroll. SBMA, Museum purchase in memory of C. Ann Booth with funds provided by Mrs. Peter Colefax, Beatrice Farwell Duncan, Mrs. Rowe Giesen, Henry C. Huglin, Prudence R. Myer, Mr. and Mrs. John Rex, Robert Skiles, Mrs. Burwell B. Smith, Carol L. Valentine, F. Bailey Vanderhoef, Jr., Mr. and Mrs. Otto Wittmann, Mr. and Mrs. David Y. Wong, and the Friends of Asian Art.



*Karl Struss: Celebrating PhotoFutures’ 20th Anniversary*

Through November 5, 2017 as part of *Highlights of the Permanent Collection*  
Ridley-Tree Gallery

In the first decades of the 20th century, American photographer Karl Struss artfully captured both the speed and automation of an increasingly industrialized United States and facets of a newly emergent American leisure class. Struss was born in 1886 to German parents living in New York City. As a young man, he studied photography at night while working days in his father’s wire factory. By 1903, he had enrolled at Columbia University to train with the Pictorialist photographer Clarence White; from 1910 through the start of World War I, he became an important member of the Photo-Secession movement that promoted the Pictorialist aim of establishing photography as a fine art. Struss gained wide acclaim for his complex platinotype process, which involved painting four layers of liquid platinum onto a single absorbent piece of paper prior to exposure. Produced in his New York studio, Struss’ photographs were shown in groundbreaking Pictorialist exhibitions and in Alfred Stieglitz’s publication *Camera Work*.



World War I and its aftermath disrupted this generative period: despite Struss’ serving in the United States military, anti-German sentiment after the war discouraged Struss from re-establishing his New York studio. In 1919, Struss relocated to Los Angeles and began a new career as a Hollywood still photographer. Distinguished by his fine art training, he was hired as a cinematographer by the renowned director Cecil B. DeMille. By 1929, Struss had won the first Academy Award for cinematography for F. W. Murnau’s classic *Sunrise* and continued making photographs, particularly of the landscape of his new California home.

Struss’ work in photography was overlooked for decades until a resurgence of interest, which included this portfolio’s production, took place in the 1970s. Struss selected 15 of his early iconic images to print in the lustrous platinum medium. New York City’s subjects include the Metropolitan Life Insurance Tower seen from a nearby open terrace, and the Brooklyn Bridge looming in the foggy night air, lit by a string of glowing orbs. Struss also ventured out of New York: later photographs reveal a sunny pier in Arverne, Long Island; figures on a balcony overlooking the Gulf of Naples in Sorrento, Italy; and an abstracted sailboat on its way to Catalina Island off the southern California coast.

*Karl Struss: A Portfolio, 1909/29* was purchased for the Santa Barbara Museum of Art with funds provided by PhotoFutures, the Museum’s support group for the photographic arts, to honor W. Brian Little (1942–2000) who, with Mrs. Kingman Douglass, founded the group in 1997. Over its two decades, PhotoFutures has acquired approximately 200 works for SBMA, which has forever enriched the Museum’s collection. It is with great gratitude to these prescient co-founders, as well as to past and current leaders and members of PhotoFutures, that the Museum’s Department of Photography and New Media looks forward to many exciting and inspiring years ahead in exploring the history and the future of the photographic arts.



Continuing Exhibition

*Highlights of the Permanent Collection*

Ongoing  
Ridley-Tree Gallery

Do you think you've seen it all? Think again. The Museum has just refreshed the *Highlights from the Permanent Collection* installation. Nearly 20 works have been swapped out to provide just a taste of the diversity and scope of the permanent collection. Included are American masters such as Georgia O'Keeffe and Edward Hopper, and Mexican modernist Gunther Gerzso. Recent and new gifts of art include a painting by French Impressionist Albert André, a gorgeous interior by James Tissot, and a sublime color field painting by Helen Frankenthaler. Light sensitive, Chinese hanging scrolls have been substituted, including a delicate painting on silk by Wang Zhao. A portfolio of New York street scenes by photographer Karl Struss have also been installed. As the Museum continues its ongoing renovation, don't forget to check back in Ridley-Tree Gallery to rediscover some of SBMA's best-known masterpieces, some newly gifted works of art, as well as long-term Impressionist masterworks lent by the Armand Hammer Foundation.

Top left: Karl Struss, *The Balcony, Sorrento*, from *Karl Struss: A Portfolio, 1909/29*, 1909 (Printed 1977–78). Platinum print, ed. 69/75. SBMA, Museum purchase with funds provided by PhotoFutures in Honor of Wm. Brian Little. © 1983 Amon Carter Museum of American Art, Fort Worth, Texas.

Inset left: Karl Struss, *Sails: En Route to Catalina*, from *Karl Struss: A Portfolio, 1909/29*, 1929 (Printed 1977–78). Platinum print, ed. 69/75. SBMA, Museum purchase with funds provided by PhotoFutures in Honor of Wm. Brian Little. © 1983 Amon Carter Museum of American Art, Fort Worth, Texas.

Top right: Kenzo Okada, *Insistence*, 1956. Oil on canvas. SBMA, Museum purchase, Donald Bear Memorial Fund.





19th- and Early 20th-Century European Art

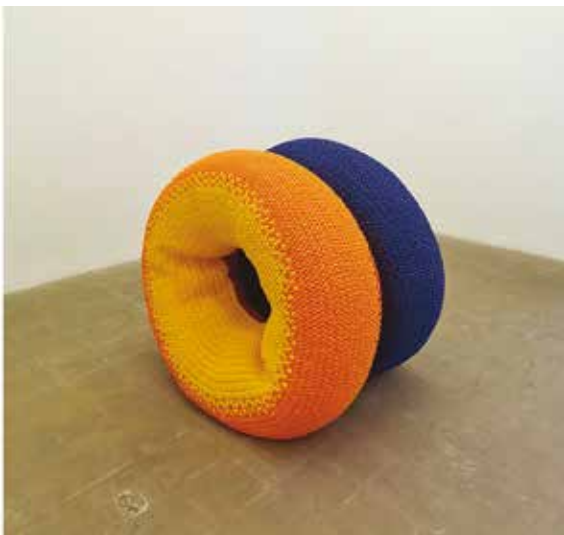
As a benefactor, trustee, scholar, and life-long art enthusiast, Ann Koepfli has played an instrumental role in SBMA’s institutional history. In addition to her dedication of time and expertise as a faithful Museum Member and Board Chair (1967–1968), she has generously gifted more than 20 important works of art to the Museum. Recently, SBMA formalized the accession of a large group of long-promised gifts, including Renaissance and Baroque prints and drawings, exquisite and rare etchings by Degas and Whistler, colorful lithographs by Marc Chagall, and an exceptional example of the early work of Maurice de Vlaminck—all of this in addition to the superb German Expressionist painting by Die Brücke artist Max Pechstein that Ann graciously donated a few years ago.

The Koepfli’s gifted Vlaminck painting joins two other paintings already in the permanent collection, rounding out the representation of his early and later career, during which he produced seemingly countless landscapes, typically organized around plunging orthogonals described with slashing black strokes and moody, turbulent skies. This painting clearly reflects Cézanne’s influence on Vlaminck in its blue-green palette and in its strong sense of compositional structure. It is a pitch-perfect example of an artist whose fiery palette and impetuous brushwork of the early Fauvist years have given way to the disciplined rigor of Cézanne’s thinly applied tapestry of directional brushstrokes.

Another exceptional highlight of the Koepfli gift is *Mary Cassatt at the Louvre, Musée des Antiques* (center spread), one of Degas’ most iconic prints. It depicts the American artist, Mary Cassatt, fashionably attired and seen from behind in the Etruscan galleries at the Louvre. This image was intended to appear in the first issue of a journal called *Le Jour et la Nuit*, on which Degas collaborated with fellow Impressionist Camille Pissarro, Cassatt, and Félix Braquemond (all of whom are also represented in SBMA’s works on paper collection). The unusual point of view from both above and below, the thematization of spectatorship as both museum-goers and objects of male delectation, and the relative flatness of the composition, which is defined by overlapping rectangles, makes this one of Degas’ most prized compositional inventions. The quality of this impression, which is the final state, is superior because of the rarity of original impressions—only a handful of other examples are known.

Many of the works on paper included in the gift were presented two years ago in *Drawings in Dialogue: Italian and Northern European Works on Paper from the Joseph B. and Ann S. Koepfli Trust* in the SBMA permanent collection galleries. The exhibition featured works by Giovanni Tiepolo, Georg Philipp Rugendas, Dirck Van Der Lisse, Matthijs Bril the Younger, and a delicately modeled Madonna portrait, attributed to Gaudenzio Ferrari, which emulates the subtle contours and atmospheric sfumato of Leonardo da Vinci’s Madonnas.

The Museum stands in awe of Ann Koepfli’s discerning eye, informed connoisseurship, and dedication to this institution, both in the past and now, with this gift of great works of art, for all time.



Contemporary Art

SBMA is pleased to announce the acquisition of an important sculpture by **Jim Isermann** (b. 1955), a Southern California artist recognized for his intermingling of art with craft and design. Accomplished in a wide range of media, including paintings, stained glass, and hand-woven fabric, he has in recent years become recognized for large-scale public sculptural installations at the University of San Francisco (2003); the MTA Los Angeles (1992 & 2006); Princeton University (2008); and the Dallas Cowboys Stadium (2010). While he values craft, he has also been working with digital technology and high-tech media for 20 years. Isermann finds beauty in utilitarian design, and his diverse influences include mid-century designers such as Herman Miller, and Charles and Ray Eames; Bauhaus figures including Josef Albers and Herbert Bayer; and artists ranging from Frank Stella to Vera Neumann. His unique approach has been tremendously influential to a generation of artists from Southern California that includes Jorge Pardo, Tobias Rehberger, Pae White, and others. *Untitled (Donuts)* (1997) belongs to a rare and coveted series of large textile sculptural and floor works he created in the mid to late 1990s, including *Untitled (rug)* (1996) and *Untitled (capsule)* (1997).



**Jenny Holzer** (b. 1950) became well known in the late 1970s and early 1980s for her graphic use of text in public works ranging from small posters to large-scale electronic billboards. In the 1980s, Holzer produced several series of public, monumental works that included bronze plaques, benches, billboards and signs. SBMA’s bench belongs to Holzer’s *Living Series*,

which includes several similar granite seats and plaques engraved with her signature one-liners. Its use of the United States governmental typeface, combined with its stone material, creates a sense of permanence and monumentality belied by its inscription’s direct, personal address to the viewer. The bench’s inscription reads: “There is a period when it is clear that you have gone wrong but you continue... Sometimes there is a luxurious amount of time before anything bad happens.” In typical fashion, Holzer’s statement is cautionary and ambiguous, encouraging the viewer to take pause and think. This work is a recent gift from Laura-Lee Woods, whose generous donations of drawings, prints, and sculptures to the Museum have considerably enriched the collection of Contemporary Art.



Photography and New Media

Following the exceptional gift of 32 photographs in December of 2016, distinguished photographer and SBMA patron Joan Almond has continued to enrich the Museum’s photographic breadth by contributing 34 additional black-and-white prints, constituting the second and final part of her gift. Her immeasurable generosity has allowed a total of 66 new photographs to enter the collection, including many by renowned artists such as Manuel Álvarez Bravo, Ruth Bernhard, William Wegman, Masao Yamamoto, and Henri Cartier-Bresson. The Museum thanks Joan Almond for her decades-long support, and for her longtime commitment to the medium of photography.

Top left: Maurice de Vlaminck, *The Bridge (Le Pont)*, ca. 1912. Oil on canvas. SBMA, Gift of the Joseph B. and Ann S. Koepfli Trust.

Inset top right: Jim Isermann, *Untitled (Donuts)*, 1997. Hand-braided cotton twill. SBMA, Museum purchase, General Art Acquisition Fund.

Inset right: Jenny Holzer, *The Living Series: There is a period when it is clear...*, 1989. Bethel white granite bench. SBMA, Gift of Laura-Lee Woods. Photo Credit: Los Angeles Modern Auctions (LAMA).

Inset bottom right: Henri Cartier-Bresson, *Hyères, France*, 1932 (Printed later). Gelatin silver print. SBMA, Gift of Joan Almond.





### Programs for Teens

The Santa Barbara Museum of Art offers a variety of opportunities for teens ranging from Junior High and High School special events, to Master Classes with visiting artists, to advanced studio classes with Museum Teaching Artists, to volunteering as Teaching Assistants in the Museum’s programs for younger students. In every case, participants grow both in art making skills and in their knowledge and awareness of, and connection to SBMA.

The Museum’s Teaching Assistant (TA) program is for 15 – 18 year olds interested in art and/or working with children. TAs are volunteers whose service counts toward the SB Unified School District’s required community service hours. Teaching Assistants support the Museum’s Teaching Artists in the classroom during Winter, Spring, and Summer art camps, preparing materials and helping children with hands-on art making, including painting, drawing, collage, printmaking, and sculpture—all structured around different themes resonating from the Museum’s permanent collection and special exhibitions.

Besides offering these high school students the opportunity for community service, the TA program provides young artists with training and skill building in art making and art education, all of which is based on a strong mentoring relationship with the Museum’s Teaching Artists. Many TAs start out as campers and long anticipate the day when they “graduate” to their new status. Their volunteer efforts often turn into actual jobs as the work they have done for the Museum translates into skills needed in the larger world. Many of the teens stay in close touch with their teacher mentors and turn to them for college letters of recommendation and job related letters of reference.

Young artists interested in honing their artmaking skills can elect to participate in Master Classes with visiting artists or Advanced Studio Classes with SBMA’s “in house” team of talented Teaching Artists. This past July, Museum Senior Teaching Artist Tina Villadolid offered a 5-day intensive advanced studio class in printmaking inspired by the exhibition *You Are Going On A Trip: Modern and Contemporary Prints from the Permanent Collection*.

Starting with the questions “What do you believe in?” and “How do you see things?” Tina invited students to use printmaking, historically one of the most diverse, immediate, and prolific forms of visual communication, as a way to deliver a bold personal statement. Students experimented with various printmaking techniques such as relief, intaglio, and mono-print, and learned how to use a small printing press. Classes took place in the Museum where access to the exhibition allowed for a daily sketching session. The class also visited nearby art galleries where they had the opportunity to discuss and explore more of Santa Barbara’s art culture. During the course of the week, the students created personal symbols, photographic self-portraits, and other personal imagery which they ultimately combined in a print collage. On the final day, their families were invited to see the work they had produced and to write a message on a Post-it Note to the young artists. As Tina Villadolid said of the intensive week of printmaking, “Our week of giving and receiving messages through art had come full circle.”

Many of the students involved in these programs return to Santa Barbara to careers with this Museum or other arts organizations, or to pursue their own entrepreneurial endeavors. Whether building their own skills and confidence or supporting younger aspiring artists, the teens involved in SBMA’s programs bring a passion for art, a desire to learn, and a commitment to community service that enliven and enrich the Museum, now and in the future.









HIGHLIGHTS  
TOUR  
1 PM  
EVERYDAY!  
(EXCEPT SUNDAYS)

<div>FOCUS TOUR "Valeska Soares" 2 pm</div> <div>PARALLEL STORIES: Richard Rodriguez in Conversation 2:30 pm</div> <div>1</div>	<div>CLOSED MONDAYS</div> <div>2</div>	<div>FOCUS TOUR "Techniques" 2 pm</div> <div>3</div>	<div>FOCUS TOUR "Highlights of the Permanent Collection" 2 pm</div> <div>4</div>	<div>FOCUS TOUR "Color" 2 pm</div> <div>1ST THURSDAY 5 – 8 pm FAMILY 1ST THURSDAY 5:30 – 7:30 pm</div> <div>5</div>	<div>FOCUS TOUR "Highlights of the Permanent Collection" 2 pm</div> <div>6</div>	<div>FOCUS TOUR "Valeska Soares" 2 pm</div> <div>7</div>
<div>FOCUS TOUR "Valeska Soares" 2 pm</div> <div>STUDIO SUNDAY on the Front Steps 1:30 – 4:30 pm</div> <div>8</div>	<div>9</div>	<div>FOCUS TOUR "Color" 2 pm</div> <div>10</div>	<div>FOCUS TOUR "Valeska Soares" 2 pm</div> <div>11</div>	<div>FOCUS TOUR "Highlights of the Permanent Collection" 2 pm</div> <div>LATIN AMERICAN FILM SERIES: Neighboring Sounds 5:30 pm</div> <div>12</div>	<div>FOCUS TOUR "Techniques" 2 pm</div> <div>13</div>	<div>FOCUS TOUR "Valeska Soares" 2 pm</div> <div>14</div>
<div>FOCUS TOUR "Valeska Soares" 2 pm</div> <div>15</div>	<div>16</div>	<div>FOCUS TOUR "Highlights of the Permanent Collection" 2 pm</div> <div>17</div>	<div>FOCUS TOUR "Color" 2 pm</div> <div>18</div>	<div>FOCUS TOUR "Valeska Soares" 2 pm</div> <div>SKETCHING IN THE GALLERIES 5:30 – 6:30 pm</div> <div>19</div>	<div>FOCUS TOUR "Highlights of the Permanent Collection" 2 pm</div> <div>20</div>	<div>FOCUS TOUR "Valeska Soares" 2 pm</div> <div>21</div>
<div>FOCUS TOUR "Valeska Soares" 2 pm</div> <div>SENSORY STUDIO 1 – 4 pm</div> <div>LECTURE: Jens Hoffman 2:30 – 4 pm</div> <div>22</div>	<div>23</div>	<div>FOCUS TOUR "Color" 2 pm</div> <div>24</div>	<div>FOCUS TOUR "Techniques" 2 pm</div> <div>25</div>	<div>FOCUS TOUR "Color" 2 pm</div> <div>26</div>	<div>FOCUS TOUR "Valeska Soares" 2 pm</div> <div>27</div>	<div>FOCUS TOUR "Highlights of the Permanent Collection" 2 pm</div> <div>28</div>
<div>FOCUS TOUR "Valeska Soares" 2 pm</div> <div>FREE FAMILY DAY: Día de los Muertos 1 – 4 pm</div> <div>29</div>	<div>Valeska Soares, <i>Love Stories IV</i> (detail) (Collections V.VI.VII.VIII), 2008.</div> <div>30</div>	<div>FOCUS TOUR "Highlights of the Permanent Collection" 2 pm</div> <div>31</div>	<div>FOCUS TOUR "Color" 2 pm</div> <div>1</div>	<div>FOCUS TOUR "Techniques" 2 pm</div> <div>1ST THURSDAY 5 – 8 pm FAMILY 1ST THURSDAY 5:30 – 7:30 pm</div> <div>2</div>	<div>FOCUS TOUR "Highlights of the Permanent Collection" 2 pm</div> <div>SOUND TRACKS: A Musical Conversation 12 – 1 pm</div> <div>3</div>	<div>FOCUS TOUR "Valeska Soares" 2 pm</div> <div>4</div>
<div>FOCUS TOUR "Valeska Soares" 2 pm</div> <div>FILM SCREENING <i>Sunrise: A Song of Two Humans</i> 2 pm</div> <div>5</div>	<div>CLOSED MONDAYS</div> <div>6</div>	<div>FOCUS TOUR "Techniques" 2 pm</div> <div>7</div>	<div>FOCUS TOUR "Highlights of the Permanent Collection" 2 pm</div> <div>8</div>	<div>FOCUS TOUR "Color" 2 pm</div> <div>9</div>	<div>Veteran's Day (observed) Offices Closed</div> <div>FOCUS TOUR "Valeska Soares" 2 pm</div> <div>10</div>	<div>Veteran's Day Galleries and Store Closed</div> <div>11</div>
<div>FOCUS TOUR "Valeska Soares" 2 pm</div> <div>STUDIO SUNDAY on the Front Steps 1:30 – 4:30 pm</div> <div>12</div>	<div>13</div>	<div>FOCUS TOUR "Highlights of the Permanent Collection" 2 pm</div> <div>14</div>	<div>FOCUS TOUR "Valeska Soares" 2 pm</div> <div>15</div>	<div>FOCUS TOUR "Highlights of the Permanent Collection" 2 pm</div> <div>SKETCHING IN THE GALLERIES 5:30 – 6:30 pm ALTIVUS STRING QUARTET 7:30 pm</div> <div>16</div>	<div>FOCUS TOUR "Color" 2 pm</div> <div>17</div>	<div>FOCUS TOUR "Valeska Soares" 2 pm</div> <div>18</div>
<div>FOCUS TOUR "Valeska Soares" 2 pm</div> <div>19</div>	<div>20</div>	<div>FOCUS TOUR "Color" 2 pm</div> <div>21</div>	<div>FOCUS TOUR "Valeska Soares" 2 pm</div> <div>22</div>	<div>Thanksgiving Day Galleries, Store, and Offices Closed</div> <div>23</div>	<div>Day After Thanksgiving Offices Closed/ Galleries and Store Open</div> <div>FOCUS TOUR "Highlights of the Permanent Collection" 2 pm</div> <div>24</div>	<div>FOCUS TOUR "Valeska Soares" 2 pm</div> <div>25</div>
<div>FOCUS TOUR "Valeska Soares" 2 pm</div> <div>26</div>	<div>27</div>	<div>FOCUS TOUR "Highlights of the Permanent Collection" 2 pm</div> <div>28</div>	<div>FOCUS TOUR "Techniques" 2 pm</div> <div>MEMBER HOLIDAY SHOPPING NIGHT 5 – 8 pm</div> <div>29</div>	<div>FOCUS TOUR "Color" 2 pm</div> <div>LECTURE: Tanya Barson 5:30 pm</div> <div>30</div>	<div>FOCUS TOUR "Highlights of the Permanent Collection" 2 pm</div> <div>1</div>	<div>FOCUS TOUR "Valeska Soares" 2 pm</div> <div>2</div>
<div>FOCUS TOUR "Valeska Soares" 2 pm</div> <div>3</div>	<div>Valeska Soares, <i>Ouroboros</i> (detail), 2014.</div> <div>4</div>	<div>FOCUS TOUR "Highlights of the Permanent Collection" 2 pm</div> <div>5</div>	<div>FOCUS TOUR "Valeska Soares" 2 pm</div> <div>6</div>	<div>FOCUS TOUR "Color" 2 pm</div> <div>1ST THURSDAY 5 – 8 pm FAMILY 1ST THURSDAY 5:30 – 7:30 pm</div> <div>7</div>	<div>FOCUS TOUR "Techniques" 2 pm</div> <div>8</div>	<div>FOCUS TOUR "Valeska Soares" 2 pm</div> <div>9</div>
<div>FOCUS TOUR "Valeska Soares" 2 pm</div> <div>STUDIO SUNDAY on the Front Steps 1:30 – 4:30 pm</div> <div>MEMBERS HOLIDAY PARTY 4:30 – 6:30 pm</div> <div>10</div>	<div>CLOSED MONDAYS</div> <div>11</div>	<div>FOCUS TOUR "Color" 2 pm</div> <div>12</div>	<div>FOCUS TOUR "Highlights of the Permanent Collection" 2 pm</div> <div>13</div>	<div>FOCUS TOUR "Valeska Soares" 2 pm</div> <div>LATIN AMERICAN FILM SERIES: <i>Ixcanul</i> 5:30 pm SKETCHING IN THE GALLERIES 5:30 – 6:30 pm</div> <div>14</div>	<div>FOCUS TOUR "Highlights of the Permanent Collection" 2 pm</div> <div>15</div>	<div>FOCUS TOUR "Color" 2 pm</div> <div>16</div>
<div>FOCUS TOUR "Valeska Soares" 2 pm</div> <div>17</div>	<div>18</div>	<div>FOCUS TOUR "Techniques" 2 pm</div> <div>19</div>	<div>FOCUS TOUR "Valeska Soares" 2 pm</div> <div>20</div>	<div>FOCUS TOUR "Highlights of the Permanent Collection" 2 pm</div> <div>21</div>	<div>FOCUS TOUR "Color" 2 pm</div> <div>22</div>	<div>FOCUS TOUR "Valeska Soares" 2 pm</div> <div>23</div>
<div>FOCUS TOUR "Valeska Soares" 2 pm</div> <div>24</div>	<div>Christmas Day Galleries, Store, and Offices Closed</div> <div>25</div>	<div>FOCUS TOUR "Highlights of the Permanent Collection" 2 pm</div> <div>26</div>	<div>FOCUS TOUR "Color" 2 pm</div> <div>27</div>	<div>FOCUS TOUR "Techniques" 2 pm</div> <div>28</div>	<div>FOCUS TOUR "Highlights of the Permanent Collection" 2 pm</div> <div>29</div>	<div>FOCUS TOUR "Valeska Soares" 2 pm</div> <div>30</div>
<div>FOCUS TOUR "Valeska Soares" 2 pm</div> <div>31</div>	<div>Valeska Soares, <i>After/Images</i> (detail), Ed. 2/3, 2007.</div> <div>1</div>	<div>2</div>	<div>3</div>	<div>4</div>	<div>5</div>	<div>6</div>

nov

dec 2017

oct



Thursdays, 5 – 8 pm

Free Thursday Evenings

SBMA is open and free to the public every Thursday evening 5 – 8 pm and includes access to all galleries and brief docent talks in select exhibitions. The Museum Store and Family Resource Center are also open during these hours. For information, visit [www.sbma.net](http://www.sbma.net).

Thursdays, 10 – 11:30 am

Art Matters

Fall 2017: Special Topics

Mary Craig Auditorium

Single tickets available the morning of the lecture: \$15 SBMA Members and Non-Members

For details, visit [www.sbma.net/artmatters](http://www.sbma.net/artmatters).



- October 5:

**Gods above the 405: Santa Barbara Sculptures at the Getty**

Jens Daehner, Associate Curator of Antiquities, J. Paul Getty Museum
- October 12:

**The Lansdowne Marbles and the Modern American Museum**

Jens Daehner, Associate Curator of Antiquities, J. Paul Getty Museum
- November 2:

**The Drama of Discovery: Conservation at the Archaeological Site of Sagalassos, Turkey**

Erik Risser, Conservator, J. Paul Getty Museum

*Please note this event's date has changed from October 19.*

Exhibition Related Programming:

Valeska Soares: Any Moment Now

Sunday, October 1, 2:30 pm

Parallel Stories: Richard Rodriguez in Conversation

Coinciding with the Getty-led Pacific Standard Time: LA/LA initiative, noted author, essayist, and commentator Richard Rodriguez explores the color brown as a metaphor for mixture, and thus the key to our cosmopolitan societies where lives interact and borrow from one another. Just as the great Mexican philosopher and essayist Octavio Paz once celebrated the dense, rich, layered complexity that is Mexican mole, opposing it to the American mania for clear gravy (American pot roast), Rodriguez embraces fusion as an essential part of the human experience. In his lyrical, resonant interweaving of family, food, religion, history, language, California, America, Mexico, we may find a new way of placing ourselves in the 21st century.

Mary Craig Auditorium

Free SBMA Members/\$10 Non-Members/\$6 Senior Non-Members

Reserve or purchase tickets at the Museum Visitor Services desks, or online at [tickets.sbma.net](http://tickets.sbma.net).

Thursdays, October 19; November 16; December 14, 5:30 – 6:30 pm

Sketching in the Galleries

All skill levels are invited to experience the tradition of sketching from original works of art in *Valeska Soares: Any Moment Now*. Museum Teaching Artists provide general guidance and all materials. Each program is open to 10 participants.

Free

To reserve a spot, contact Kelly Almeida at 884.6457 or [kalmeida@sbma.net](mailto:kalmeida@sbma.net).

Thursday, November 30, 5:30 pm

Lecture: Tanya Barson

Chief Curator, Museu d'Art Contemporani de Barcelona speaks about the work of Valeska Soares.

Free

Reserve tickets at the Museum Visitor Services desks, or online at [tickets.sbma.net](http://tickets.sbma.net).

Exhibition Related Programming:

Valeska Soares: Any Moment Now

Latin American Film Series

Unrest, Distance, and the Future

Alluding to speculative futures and spaces, irrevocable pasts, gender perspectives, and living with fear as a condition of contemporary life, the films represented in this series delve into relationships between cinema and truth, individuals and their environment, and the place of stories as engaged social practice. Organized by SBMA and curated by UCSB Professor of Film and Media Studies, Cristina Venegas, this special series correlates to three of the Santa Barbara-based Pacific Standard Time: LA/LA exhibitions: *Valeska Soares: Any Moment Now* (SBMA); *Guatemala from 33,000 km: Contemporary Art, 1960 – Present* (MCASB); and *The Schoolhouse and the Bus: Mobility, Pedagogy, and Engagement, Two Projects by Pablo Helguera and Suzanne Lacy / Pilar Riaño-Alcalá* (AD&A Museum, UCSB).

Free

Thursday, October 12, 5:30 pm

Neighboring Sounds

(Kleber Mendonça Filho, 2012)

On a quiet city block in the coastal city of Recife, ruled by an aging patriarch and his sons, a recent spate of petty crime has rattled the nerves of the well-to-do residents. When a mysterious security firm is brought in to watch over the neighborhood, it sparks the fears and anxieties of a divided society still haunted by its past. Portuguese with English subtitles. (131 min.)

Mary Craig Auditorium/Santa Barbara Museum of Art

Reserve tickets at the Museum Visitor Services desks, or online at [tickets.sbma.net](http://tickets.sbma.net).

Thursday, November 9, 7 pm

Tempestad

(Tatiana Huezo, 2016) Documentary

The emotional journeys of two women victimized by corruption and injustice in Mexico and of the love, dignity, and resistance that allowed them to survive. The film maker Tatiana Huezo will introduce the film. Spanish with English subtitles. (105 min.)

Pollock Theater/Carsey-Wolf Center/UCSB

Visit [carseywolf.ucsb.edu/pollock/events/tempestad](http://carseywolf.ucsb.edu/pollock/events/tempestad) to reserve tickets and guarantee a seat.

Thursday, December 14, 5:30 pm

Ixcanul

(Volcano, Jayro Bustamante, 2015)

The brilliant debut by Guatemalan filmmaker Jayro Bustamante is a mesmerizing fusion of fact and fable, a dreamlike depiction of the daily lives of Kaqchikel-speaking Mayans on a coffee plantation at the base of an active volcano. Immersing us in its characters' customs and beliefs, *Ixcanul* chronicles with unblinking realism, a disappearing tradition and a disappearing people. Spanish and Kaqchikel with English subtitles. (91 min.)

Mary Craig Auditorium/Santa Barbara Museum of Art

Reserve tickets at the Museum Visitor Services desks, or online at [tickets.sbma.net](http://tickets.sbma.net).

Pacific Standard Time: LA/LA Santa Barbara Weekend

The PST: LA/LA Santa Barbara collaboration culminates on the weekend of October 20–22 with panel discussions, symposia, performances, and lectures—among all participating organizations. The following are events at the Santa Barbara Museum of Art. For a complete listing of activities, visit [www.sbma.net/pstsb](http://www.sbma.net/pstsb).

Sunday, October 22, 1 – 4 pm

Sensory Studio

Discover pop-up talks and playful artistic activations involving taste, touch, sight, and scent. Participate or simply enjoy the art, and stop and smell the roses.

Free

Sunday, October 22, 2:30 – 4 pm

Lecture: Jens Hoffman

Jens Hoffman, Senior Curator at the Museum of Contemporary Art Detroit and Director of Special Exhibitions and Public Programs, Jewish Museum, NY, speaks about the work of Valeska Soares.

Mary Craig Auditorium

Free

Reserve tickets at the Museum Visitor Services desks, or online at [tickets.sbma.net](http://tickets.sbma.net).



Free Community Special Event!

Saturday, October 14, 2 pm

Walter Isaacson

Leonardo da Vinci: The Secrets of History’s Most Creative Genius

Walter Isaacson, former chairman of CNN and editor of *Time* magazine, and author of such biographies as *Steve Jobs* and *Einstein: His Life and Universe*, gives an illustrated presentation on his new book, *Leonardo da Vinci*, demonstrating how da Vinci’s genius for art, science, and technology was based on skills we can improve in ourselves, such as passionate curiosity, careful observation, and playful imagination. Books are available for purchase and signing.

Presented by UCSB Arts & Lectures in association with the Santa Barbara Museum of Art  
Location: Arlington Theatre

For more information, visit [artsandlectures.ucsb.edu](http://artsandlectures.ucsb.edu)

Friday, November 3, 12 – 1 pm

Sound Tracks: A Musical Conversation

A curated conversation about the songs that shaped the lives of musical artist Camilo Lara and singer-songwriter Ceci Bastida of Mexrrissey.

Co-presented by the Santa Barbara Museum of Art and UCSB Arts & Lectures, as part of The Lynda and Bruce Thematic Learning Initiative

Mary Craig Auditorium

Free

Reserve tickets at the Visitor Services desks or online at [tickets.sbma.net](http://tickets.sbma.net)

Exhibition Related Programming:

Karl Struss: Celebrating PhotoFutures’ 20th Anniversary



Sunday, November 5, 2 pm

Film Screening  
Sunrise: A Song of Two Humans

Celebrate the artistry and craftsmanship of photographer and cinematographer Karl Struss with F. W. Murnau’s 1927 masterpiece film. Professor Charles Wolfe of UCSB’s Film and Media Studies Department introduces this exquisitely

photographed tale of faltering love and redemption, for which Struss won an Academy Award for Best Cinematography in 1929. Produced by William Fox, *Sunrise* was also honored by the Academy for its Unique and Artistic Quality of Production, the only occasion in which this prize has been awarded in the history of the Oscars. A Q&A led by Professor Wolfe follows the screening. (95 min.)

Mary Craig Auditorium

Free

Reserve tickets at the Visitor Services desks or online at [tickets.sbma.net](http://tickets.sbma.net)

Thursday, November 16, 7:30 pm

Altius String Quartet

Formed in 2011 at Southern Methodist University Meadows School of the Arts, Altius currently holds the position as Fellowship String Quartet-in-Residence at the University of Colorado-Boulder and have been awarded prizes at many internationally respected competitions, including the 2016 Alice and Eleonore Schoenfeld International String Competition, the 2014 Fischhoff National Chamber Music Competition, the 2014 Coltman Chamber Music Competition, and the 2013 Plowman Chamber Music Competition. The program includes *Quartet, Op. 76, No. 4* by Haydn, *Quartet in f minor, Op. 13* by Mendelssohn, and *American Quartet* by Dvořák.

Mary Craig Auditorium

\$20 SBMA Members/ \$25 Non-Members

Purchase tickets at the Visitor Services desks or online at [tickets.sbma.net](http://tickets.sbma.net)



Thursdays, October 5; November 2; December 7, 5:30 – 7:30 pm

Family 1st Thursdays

Bring the whole family and enjoy 1st Thursday together in SBMA’s Family Resource Center located across from the Museum Cafe on the Lower Level. Museum Teaching Artists assist families in creating special exhibition-based art projects. Afterwards, enjoy the galleries until 8 pm.

Free

Sundays, October 8; November 12; December 10, 1:30 – 4:30 pm

Studio Sundays on the Front Steps

Visitors of all ages are welcome to participate in this hands-on workshop with SBMA Teaching Artists on the Museum’s front steps. Each month explore a different medium, including clay, metal, ink, wood, photography, and paper, and gain inspiration from works of art in the Museum’s permanent collection or special exhibitions.

Free

Sunday, October 29, 1 – 4 pm

Free Family Day: Día de los Muertos

For the 28th year, the Museum honors the Mexican tradition of remembering the dead with a variety of family festivities in the galleries, front steps, and back plaza including music, dance performances, art-making activities, a special display of altars created by school and community groups, and traditional refreshments.

Free



### Member Events and Activities

#### Friday, November 24 – Sunday, December 24 Member Double Discount Days

Members enjoy an extra 10% off (for a total of 20% savings!) in the Museum Store from November 24 to December 24. Find the perfect gift from a variety of merchandise unique to SBMA’s permanent collection and special exhibitions, including the finest selection of art books, one-of-a-kind handmade jewelry, and distinctive children’s books and toys. Plus, shopping at the Museum Store supports SBMA!

#### Wednesday, November 29, 5 – 8 pm Member Holiday Shopping Night

Join us for the popular Member Holiday Shopping Night in the Museum Store—the perfect time to get a start on finding the perfect gift for everyone on your list! Enjoy complimentary gift wrapping, refreshments, and a special gift with purchase. Don’t forget to bring your 20% Double Discount Coupon for extra savings!

#### Sunday, December 10, 4:30 – 6:30 pm Holiday Party

Celebrate the season with SBMA! Members are invited to enjoy an afternoon of music, gallery tours, art activities, refreshments, and more. Bring the whole family to enjoy the current exhibition *Valeska Soares: Any Moment Now*. Invitations will be mailed. For more information, contact the Membership office at 884.6490 or [membership@sbma.net](mailto:membership@sbma.net).

#### Spring 2018 Art of the Table

Save the date! Art of the Table features spectacular table settings created by premiere designers and inspired by works of art from the Museum’s permanent collection. This two-day event begins with an elegant preview reception with the designers in the galleries followed by public viewing of the displays the next day. Art of the Table is sponsored by the SBMA Women’s Board. The Board’s purpose is to support the Museum by raising funds for its exhibitions, acquisitions, educational programs, and special projects. For information about Art of the Table or to become an event sponsor, visit [www.sbmawb.org](http://www.sbmawb.org) or contact Karen Kawaguchi at 884.6428 or [kkawaguchi@sbma.net](mailto:kkawaguchi@sbma.net).



#### Give the Gift of Membership!

A membership to the Santa Barbara Museum of Art is the perfect gift for any occasion and one that can be enjoyed throughout the year. Members receive exclusive benefits, including

free admission, discounts on lectures and programs, a 10% discount in the Museum Store and Cafe, and more! Don’t miss the opportunity to give the gift of a General Membership for \$30 (that’s 50% off!) December 11 – 15. For more information, call 884.6490, visit [www.sbma.net](http://www.sbma.net), or stop by the Visitor Services desks.

#### Santa Barbara Sailing Center

SBMA is proud to partner with Santa Barbara Sailing Center. As an SBMA Member, you now receive the following perks at Santa Barbara Sailing Center:

- 2-for-1 kayaking/stand-up paddle boarding and 2-for-1 Harbor Cruise \*\*one time each
- 10% off everything (except Instructional Sailing packages)

Present your SBMA membership card at Santa Barbara Sailing Center to redeem the discount. Visit [www.sbsail.com](http://www.sbsail.com) to plan your trip.

### Thank You, New and Upgrading Members

The Santa Barbara Museum of Art welcomes all new and upgrading Members. Your generous support allows SBMA to further its mission of encouraging all people to develop and increase their understanding and appreciation of art. For information about giving the gift of membership or upgrading your membership, contact Alison Dernbach, Membership Coordinator, at 884.6490 or [membership@sbma.net](mailto:membership@sbma.net).

The list below is of new and upgrading memberships from June 1, 2017 to August 31, 2017. Thank you!

#### New and Returning Members

Julia Atwood and Daniel Caffery  
Teresa Baker and Roberto Robledo  
Gisela Balents  
Christine Bamberger  
Sara and Henry Bangser  
Lisa and Robert Bartzokas  
Sally Beckham  
Joseph Bobrow  
Karen and Steve Braff  
Chris Brock and Paul Fortune  
Judy Bruton  
Kathryn Burba  
Sarah-Binah Burke and Coco Rautiola  
Sheena and Chris Caldow  
Veronica and Henry Calles  
Jean Campbell and Stephanie Campbell  
Vanessa Campos and Juan Quiroga  
Chandra Carr and Julian Geanta  
Elizabeth Caylor  
Shauna Cazabat and Aiyana Cazabat  
Lynette Cervantes and Joey M. Pellegrini  
Patricia and Graeme Clifford  
Elinor Cohen  
Colette Cosentino and Peter Horjus  
Sharon Coughran  
Kennan and Brian Court  
Josefa Grossi and William A. Danner  
Crista Dix  
Keri Djupstrom  
Libby Doheny  
Whitney and Tyler Duncan  
Lisa Dunlap  
Heidi and Richard Eppolito  
Patricia and Carlyle Eubank  
Frances Fouch and Pamela Shaw  
Maria R. and David Frantz  
Roxanne and Geoff Gaggs  
Jana and Brian Galura  
Ted and Virginia Gardner  
Henry Graumlich  
Janet Green and Harry C. Feick  
Brianna and Troy Hammond  
Clayton Hartmann  
Martha Henderson  
Patty and Brian Herman  
Gretchen Hewlett  
Nellie Hill and Jon Payne  
Debi and Greg Hoffmann  
Veronica Ann Juarez  
Mary Kaljian  
Reiko Kanda  
Debra and Robert Kasirer  
Ann Koepfli  
Zoe Landers

Carl Lasner and Diana DiOrio Lasner  
Yollanda Leon  
Suzanne Jill Levine  
Rachel and Everett Lipman  
Cameron and John Lorenz  
Ellen and Roger Lowe  
Nilou Lueck and Chris Lueck  
Kimberly Lynch  
Melissa Marcus and Bruce Sullivan  
Tony Mark  
Ann R. and Robert Martin  
Alice and Albert McCurdy  
Cheryl and Evan Medow  
Christy Crowe Meisner  
Meryam and Mike Molyneux  
Marygrace and Karl Monteleone  
Susan Motika  
Roxanne H. and Huntley Mueller  
Mary Beth Myers and Antonio Mendoza  
Britt Nelson and Devon Jackson  
Kristi Newton-Beban and Joseph Beban  
Alison Nikitopoulos and Kyle Taylor  
Dean and Holly Noble  
Reza Omori  
Cathryn Palmieri  
Christy and Johnny Philip  
Vichai Phungrasamee  
Miriam and Clifford J. Proud  
Zoltan S. Puskas and Victoria Lindenauer  
Hazel Ribarich  
Mary Richeson  
Jill and Dennis Roach  
Cathy Romero  
Christine Rosensteel  
Sonya Roth  
Patti and John Rothrock  
Julie Sanregret and June Sanregret  
Marianna Scanlon  
Carol Schmidt and Kathy LePage  
Camille and Dan Segna  
Leigh and Doug Shreves  
Sherry Shultz  
Jill and Ian Smith  
Billie and Richard Sumner  
George Tertrick  
Anne and George Tetrick  
Rori and Luca Trovato  
Mary and Jeffrey P. Tuck  
Debra Tygell and Linda Vanderwyk  
Blanca Mesa and Jon Ullman  
Mr. and Mrs. Terry Valeski  
Joanna and Jan Marco von Yurt  
Jule Vowinckel  
Deborah Walsh and Colin Walsh  
Dorothy Blasing and William Walt  
Judith Ward

#### Upgrading Members

Jacqueline Abbud and Carlos Aguirre  
Joan and Norman Armour  
Adela Barcia and Aidan Barcia-Bacon  
Laurel Beebe Barrack and Nicholas Barrack  
Polly Bonnell and Camille Bonnell  
Barbara Chalmers  
Ann C. Cooluris and Carolyn Diacos  
Kathleen and Robin Frost  
Oxana Danina Hakan and Michael J. Hakan  
Rosalie A. Hallock  
Elizabeth Hartmann  
Joanne C. Holderman  
Donanne and Frederic Hunter  
Karen and George Johnson  
Judith and James Kahan  
Ruth Kovacs  
Alicia and Morton Maizlish  
Alice and Varouj Minassian  
Katherine Murray-Morse and Douglas W. Morse  
Barbara and Gerrold Rubin  
Debbie Saucedo  
Diane and Charles Sheldon  
Patricia and L. David Tisdale  
Vicki and Brian Woolford  
Alex and Gina Ziegler

### Do you love being an SBMA Member?

Tell us about it! We are looking for Member stories to feature in upcoming newsletters or on our website. Tell us why you joined, the events or programs you enjoy as a Member, or why you love SBMA! Call 884.6490 or email [membership@sbma.net](mailto:membership@sbma.net) to tell your story today. Here’s what some of our Members are saying about SBMA:

“Love the Museum!” —Lila and Robert Eisberg, Members since 1984

“SBMA is a wonderful resource. As an Artist-Architect I really appreciate the quality and variety of exhibitions/shows.” —Yvette and Richard Franklin, Members since 1998

“Splendid!” —Jason LoCicero, Member since 1985





Imagine More...

has art storage capacity that Santa Barbara lacks. Thanks to the expertise and diligence of John Coplin, SBMA Director of Facilities and Installations, and Chris Park, consultant for the Registration Department, the overwhelming process of finding locations, and packing, crating, and transporting a vast amount of artwork was handled efficiently and without a hitch.

First to go were 14,000 unframed works on paper—photographs, prints, and drawings. These were placed in sealed containers and transferred to a museum in Los Angeles that had extra storage space for rent. Of SBMA’s 1,500 paintings, roughly 75% are headed to commercial fine art storage facilities in Los Angeles. In addition, part of SBMA’s Ridley-Tree Education Center at McCormick House has been repurposed for storage; and although it cannot be fully climate controlled, it will be used to house stone pieces, primarily granite and marble sculpture, which are bulky and expensive to ship and store commercially.



Chris Park, consultant for the SBMA Registration Department, readies crates of artwork to be relocated.

wonderful exposure for its important collection. Assistant Director and Chief Curator Eik Kahng continues to look for other loan opportunities. Recent exhibitions, including *Scenery, Story, Spirit: American Painting and Sculpture from the Santa Barbara Museum of Art* for instance, remain packed and available for loan to other institutions.

Meanwhile, storage vaults that aren't being demolished at this stage of construction are being redesigned to house the paintings and other works which will be needed for upcoming exhibitions, using new state-of-the-art equipment that will become a permanent part of SBMA’s storage facilities in the future.

Gloria Martinez, SBMA’s Senior Registrar, is the general in charge of maneuvers. “We have to stay one step ahead of the construction schedule,” she notes, “while at the same time keeping our exhibitions fresh and handling loan shows like the *Valeska Soares* exhibition.”

### Naming Opportunities

Art is long and life is short, as the saying goes, but the Imagine More Capital Campaign gives donors an opportunity to piggyback on art’s longevity and be remembered for the life of the SBMA institution. Up to 50 spaces in the renovated Museum building will, long into the future, bear the names of generous donors who have the capacity to make major gifts in support of the project.

One space no longer available is the office of the Senior Development Officer. Earlier this summer, the Women’s Board, in the midst of a five-year pledge to the capital campaign, chose to have their name adorn this space. According to Fran Morrow, the current Women’s Board president, “Karen Kawaguchi has done an incredible job as our liaison for many years. We wanted to thank and recognize her for all the help she gives us by attaching our name to her office. Of course, other people will occupy the office in the future, but we saw this as a way to honor Karen now.”

A range of naming opportunities is available for different levels of contribution—starting at \$100,000 for such spaces as the Visitor Locker Areas and Curatorial Assistant Offices, up to \$10,000,000 for the Roof Garden and Pavilion and Museum Entrances. As with all gifts to the capital campaign, the donation can be staggered over five years; a pledge is all that is needed to reserve the naming opportunity of choice.

In order to keep the Museum open to the public throughout the renovation project, construction is being carried out in multiple stages. Therefore, a number of spaces that will carry names won’t be completed for several years. The naming opportunities, however, can all be reserved now—even for the Roof Garden, the last delicious piece of the pie. For more information about the capital campaign naming opportunities, contact Gina Benesh, Development Director, at 884.6431.

### Where Does the Art Go?

The logistics of moving 27,000 art objects to accommodate the renovation of the Museum storage spaces is one daunting task. First came lists from the curators: anything they might need for exhibitions over the next two years had to be separated from other pieces that can go into deep storage. Then, locations had to be found that could hold SBMA’s art, keeping in mind security, climate-control, and financial considerations. For the most part, this meant looking to Los Angeles, which

### SBMA Welcomes New Trustees

The Museum is pleased to announce the newest members of its Board of Trustees for 2017–18: David Gersh, Christine Vanderbilt Holland, Sarah Vedder, and Bruce Worster. In addition, Kenneth Anderson returns to the Board of Trustees after a one year hiatus. They will serve under the leadership of Board Chair John C. Bishop, Jr.

The term of the newly-elected Trustees officially began July 1, 2017.



**Kenneth Anderson** is a retired partner of the law firm Gibson, Dunn & Crutcher LLP, where he practiced employment law representing management for 34 years and ran the Firm’s Los Angeles office. He still oversees the Firm’s worldwide art collection, which was started in the early 1980s and includes well over 700 works ranging from California landscape art to New York- and London-based contemporary art. Prior to his civilian legal career, he served in the Navy as an officer of the JAG Corps from 1966 to 1969, after graduating Harvard College magna cum laude, Phi Beta Kappa; and Harvard Law School. Mr. Anderson was originally elected to the Santa Barbara Museum of Art Board of Trustees in 2005, served as Vice Chair in 2009 and 2010, and as Chair from 2011 to 2015. He has also been a member of SBMA’s Finance, Collections, and Development Committees. He and his wife have maintained a Santa Barbara residence since 1992.



**David Gersh** spent 36 years in the practice of corporate and securities law, negotiating, structuring, and executing complex corporate transactions. He is a retired partner of Paul Hastings, one of the renowned international law firms. He participated on behalf of Frank Sinatra in the sale of Warner Bros. Studios to Kinney National Corporation to create what is now Time Warner. In addition, he was lead counsel to the British company, TVS Entertainment, in its acquisition of MTM Entertainment, for whom he acted as outside general counsel for more than five years until its sale to the Family Channel. Mr. Gersh is a past member of the Executive Committee of the Business Law Section of the State Bar of California. He chaired the committee that drafted the Revised California Limited Partnership Act. He is Chairman Emeritus of the board of directors of the Los Angeles Chamber Orchestra and past President of the Los Angeles Hillel Council. In addition, he is Vice-Chairman of the Board of United WestLabs, a laboratory outreach provider. Mr. Gersh received his BS degree, with honors, and his MBA from UCLA. He was awarded his JD, cum laude, from Harvard Law School. He is also a Certified Public Accountant. Mr. Gersh is a published poet and an award-winning author of four mystery books. He and his wife, Anne, are avid art collectors.



**Christine Vanderbilt Holland** has been a resident of Santa Barbara since 1996, and is a former attorney who worked in civil litigation with several Los Angeles firms, where her specialties included insurance bad faith defense and professional liability defense. Ms. Holland retired from law, and for the past 15 years has enjoyed pursuing a variety of activities in Santa Barbara, with a chief area of interest in the visual arts and art history, with a focus on SBMA. She was a member of the SBMA Women’s Board for 3 years, and then joined the SBMA Docent Council where she has volunteered as a Docent for 12 years and has also served as Adult Tour Chair, Vice-President, and President. She was named “Docent of the Year” in 2015. Ms. Holland has also served on the Steering Committee for SBMA’s Museum Collectors’ Council for the past nine years. Among other cultural organizations in Santa Barbara, she served on the Board of The Ensemble Theatre for eight years, acting as its President during the time of the funding and construction of the New Vic Theatre; is a recently-elected Board Member of Opera Santa Barbara; and is a supporter of the Music Academy of the West.



**Sarah Vedder** was born in Denver, CO but spent her childhood in Seattle and Cedar Rapids, IA. She returned to Colorado for college, where she attended Colorado College and majored in art. For 31 years, she has been a member of the OAK Group, which is an association of landscape painters that works with conservation organizations on land preservation projects. Since 2002, she has been represented by Sullivan Goss Gallery in Santa Barbara. Her volunteer work in Santa Barbara County began with the Santa Barbara Junior League. While her daughters were at Crane School, she was active with the parents’ association, and served as its president. In addition, Ms. Vedder has served on the board of the Art Affiliates at UCSB, and also served as president of the board. She is a sustaining member of the Braille Institute Auxiliary of Santa Barbara and of the Lobero Theatre Associates. She and her husband, Phillip, have lived on their citrus and avocado ranch near Carpinteria since 1981, where they raised their two daughters.



**Bruce Worster** is a private investor and advisor with 30 years of experience in high-technology product and business development. In 2001, he retired as a vice president of JDS-Uniphase Corporation. Prior to the merger of Uniphase Corporation and JDS Fitel, he was the Founder, Chief Technical Officer, and, ultimately, President of Ultrapointe Corporation, a subsidiary of Uniphase. After his retirement, he served as a director of Zygo Corporation from 2002 to 2010 and as Chairman from 2009 to 2010. He is a graduate of Harvey Mudd College, and holds a Ph.D. in Physics from UC Santa Barbara and an MBA from Santa Clara University. Currently, he is a trustee of Harvey Mudd College and a member of the UC Santa Barbara Dean of Science’s advisory cabinet, and, along with his wife Susan, a member of the Getty Museum’s Photographs Council. In addition, Mr. Worster was a trustee of the San Jose Museum of Art from 2012 through 2015. He and Susan relocated to Santa Barbara in September 2015 and are collectors of vintage and contemporary photography.





### Establish a Legacy

A planned gift may be the perfect way to establish a legacy for you and your family. By making a legacy gift to SBMA, you recognize the extraordinary value of art in our lives and the generations to come.

Leaving a gift to the Museum is easy. Did you know bequests from a will or trust are the most common way to leave a gift? Other gift options include life income plans (charitable gift annuities and charitable remainder trusts), charitable lead trusts, gifts of life insurance policies, and gifts of tangible personal property and art.

We invite you to become a member of the Legacy Society, the recognition society for individuals who have chosen to make planned gifts to the Santa Barbara Museum of Art. If you have included the Museum in your estate plans, please contact the Museum to work with you and your advisors to make certain your intentions are carried out. For more information of if you have questions, contact Karen Kawaguchi at 884.6428 or [kkawaguchi@sbma.net](mailto:kkawaguchi@sbma.net).

### Make a Gift to the Annual Fund

The work of the Santa Barbara Museum of Art would not be possible without the support of a community of generous Members and donors. Contributions to the Museum’s Annual Fund provides vital support in the areas of exhibitions, conservation and care of the artwork in the permanent collection, educational programs for children and adults, and free programs and community days, making art accessible to everyone in the community.

To make a gift, use the enclosed envelope, visit us at [sbma.net/support/annualfund](http://sbma.net/support/annualfund), or contact Karen Kawaguchi, Senior Development Officer, at 884.6428 or [kkawaguchi@sbma.net](mailto:kkawaguchi@sbma.net).

### Thank You

Contributing to the Santa Barbara Museum of Art helps build a community that is connected, enriched, and enlivened by art. SBMA gratefully acknowledges the individuals, organizations, and foundations for their generous support for our exhibitions, acquisitions, operating support, and education programs in the fiscal year ending June 30, 2017. Included are the names of those who made gifts of \$2,500 or greater, in cash, stock, and pledges. Bequests and memberships are incorporated into the totals. Donors of gifts of art are listed separately. If there is an error or an omission, the Museum sincerely apologizes and asks that you bring it to the attention of Karen Kawaguchi, Senior Development Officer, at 884.6428.

#### \$3,500,000+

Diane Cunningham\*

#### \$1,000,000+

Lillian Lovelace

#### \$400,000+

Diane and Selby\* Sullivan

#### \$200,000+

Basil Alkazzi  
Patricia Aoyama and Chris Kleveland  
Jill and John C. Bishop, Jr.  
Susan Bowey  
Marcia and John Mike Cohen  
Joan Davidson and John Schnittker  
Connie Frank and Evan C. Thompson  
Virginia Ridder\*

#### \$100,000+

Anonymous  
Jane and Kenneth Anderson  
Leslie and Philip Bernstein  
Robert and Mercedes Eichholz Foundation  
Christine and Robert Emmons  
Audrey and Timothy Fisher  
Martha and John Gabbert  
Betsy and Jule Hannaford  
Joan and Palmer Jackson  
Gina and Joseph Jannotta  
Luria Foundation  
Gretchen and Marshall Milligan  
Joanne Pearson  
Irene and Robert Stone  
Clay Tedeschi  
Anne and Michael\* Towbes  
Jane and Michael G. Wilson and the Dana & Albert R. Broccoli Charitable Foundation

#### \$75,000+

Anonymous  
Zora and Les Charles  
Lois Erburu  
Siri and Bob Marshall  
SBMA Women’s Board  
Jeanne Towles in Memory of Stokley Towles

#### \$50,000+

John C. and Shelby C. Bowen Charitable Foundation  
Larry J. Feinberg and Starr Siegele  
Elaine and Michael Gray  
Hutton Parker Foundation  
Donna Kelsey  
Timothy and Pamela Rodgers  
Santa Barbara Foundation

#### \$25,000+

Albert and Antoinette Amorteguy  
Gwendolyn and Henry Baker  
Patricia and Richard Blake  
California Arts Council  
Richard and Melanie DeSchutter  
Dorothy and John Gardner  
Perri Harcourt  
Cyndee Howard and Lesley Cunningham  
Natalia and Michael Howe  
June and William Kistler  
Jacquelyn Klein-Brown

Herminia Lewis\*  
Sandy and Douglas McCartney  
Patricia McNulty Mitchell  
Cynthia and Chapin Nolen  
Efrem H. Ostrow\*  
Nancy B. Schlosser and the Schlosser Family Trust  
George Schoellkopf and Gerald Incandela  
Marianne Sprague  
Patricia and Erwin Straehley

#### \$10,000+

Anonymous (2)  
The Arvey Foundation  
The Buddy Taub Foundation  
Robin and Dan Cerf  
Nancy and Roger Davidson  
Betty and Brack Duker  
Edison International  
G. A. Fowler Family Foundation  
Goldman, Sachs & Co.  
Griffiths Charitable Foundation  
Gregg Hackethal and Penny Jenkins  
Elizabeth Bixby Janeway Foundation  
Michelle Joanou  
JPMorgan Chase & Co.  
Elaine and Herbert Kendall  
Kind World Foundation  
Kupiec Architects  
Brad Lemons  
LLWW Foundation  
J. Paul Longanbach and Donald E. Polk  
Montecito Bank & Trust  
Val and Bob Montgomery  
Françoise and James Park  
Lady Leslie Ridley-Tree  
Santa Barbara County Office of Arts and Culture  
Maryan Schall  
Vicki and Patrick Stone  
The Towbes Foundation  
Dana White  
Gregg R. Wilson and John A. Maienza  
Patricia Yzurdiaga

#### \$5,000+

Brier and Kent Allebrand  
Gerald Bidwell and Geraldine Pope Bidwell  
Sharon and David Bradford  
Louise Brant\*  
Weiss Family Foundation  
Michele and Arnold Brustin  
Fred Burrows and UBS Financial Services, Inc.  
Canterbury Consulting  
Angela Hemingway and Glen Charles  
Candace Dauphinot and Richard Brumm  
Julia Delgado, M.D.  
Jane Eagleton  
Cinda and Donnelley Erdman  
First Republic Bank  
Louise Gaylord  
Katherine and Richard Godfrey  
Paul Guido and Steve Blain  
Lorna S. Hedges  
Wilkie Brothers Foundation  
Cecia and Milt Hess  
Christine and Michael Holland  
Judith L. Hopkinson  
Rebecca Kapustay and David Ludwig

Kirby-Jones Foundation  
Patricia Kohlen and Corinne Kohlen  
The Lehrer Family Foundation  
The Little One Foundation  
Carole E. MacElhenny  
Manchester Capital Management, LLC  
Charlene and Tom Marsh  
Oscar Marx and Kathleen Luke-Marx  
Amanda McIntyre  
Mimi Michaelis  
Diane and Doug Morgan  
Marie Morrisroe  
Frances M. Morrow  
Mullen & Henzell LLP  
Tony and Marti Oppenheimer  
Christine Pinkerton and Paul Murphy  
Lorie and Michael Porter  
Sheila and Tom Prendiville  
Dorothy B. Roberts  
Helene Segal and George Konstantinow  
Stephanie and Fred Shuman  
Prudy Squier and Steve Sparklin  
Mary Lynn and Warren Staley  
Louise L. Tighe Family Charitable Lead Trust  
U.S. Bank  
Patricia Van Every  
Carol Vernon and Robert Turbin  
Sheila Wald  
Kathleen and Bill\* Weber  
Susan and Bruce Worster  
Carolyn and Philip Wyatt  
Evelyn H. Zuck\*

#### \$2,500+

Anonymous  
Marta Holsman Babson  
Bank of America  
Richard C. Banks  
Jill and Arnold Bellowe  
Alberta Binns  
Sheila and Michael Bonsignore  
Titus Brenninkmeijer  
Lynn and Christopher Brown  
Erwin Clahassey  
Ann C. Cooluris and Carolyn Diacos  
Joan and Robert Dewhirst  
Mike and Marty Diani  
George and Kate Diskant  
Mary Tonetti Dorra  
Melissa and David Dvorak  
Marilyn Easley  
Henrietta Holsman Fore  
Georgia Funsten  
Priscilla and Jason Gaines  
Mary Garton  
Jane Gottlieb and David Obst  
Diane and Bruce Halle  
Mary and Douglas Hampson  
Anne and Houston Harte  
Kimberly and Michael Hayes  
Loretta Hubbard  
Jodie Ireland and Chris Baker  
Nancy and Jerry Jensen  
Diane Johnson  
Dee and Stephen Jones  
Frances E. Kent  
Jill Kent  
Linda and Michael Keston  
Suzie and Bruce Kovner  
Travis and Tom Kranz

Deanna and William Major  
Elizabeth and Robert Manger  
Gloria and B. Keith Martin  
Sheila and Frank McGinity  
Lisa K. Meulbroek and Brent R. Harris  
Rosemary and Nicholas Mutton  
Betsy and Charles Newman  
Nancy and Douglas Norberg  
Eileen and Alex Rasmussen  
Regina and Rick Roney  
The Rubin-Ladd Foundation  
Rosemary and Richard Sanders  
Leanne Schlinger  
Mary Alice and W. Tudor  
Molora Vadnais  
Dianne and Daniel Vapnek  
Susan\* and Hubert Vos  
Gail Wasserman  
Patricia and Nicholas Weber  
Lynda Weinman and Bruce Heavin  
Wells Fargo Foundation  
*\* Deceased*

#### Gifts of Art

Joan Almond  
Carroll and Susanne Barrymore  
Cecilia Dan  
Beatrice Farwell Duncan Trust Estate  
Jane Eagleton  
Julia Emerson  
Nancy Escher  
Judy Adams Farris  
Promised gift of Ronald Fendon in memory of Marie-Louise Harris Fendon  
Martha and John Gabbert  
Peter Halley in honor of the 75th Anniversary of the Santa Barbara Museum of Art  
Thelma Hamilton  
Anne Adams Helms and Ken Helms  
Martha Henderson  
Steven Hull and Violet Hull  
Phyllis and David Johnston in honor of Marshall and Gretchen Milligan  
Akira and Reiko Kanda, Tokyo, Japan  
The Kobal Foundation in honor of Karen Sinsheimer  
Marla and Jeffrey Michaels  
Hamilton T. and Marti Oppenheimer  
Narendra and Rita Parson Family Trust  
Bequest of Hugh E. and Marjorie S. Petersen  
Yasuhide Rokutani  
The Rubin-Ladd Foundation  
Elisabeth and Fred Shima  
Peyton Skipwith and his children, Selina, Amber and Grey, in honor of Mary Richeson and in memory of Will Richeson, recalling many happy memories and enduring friendships  
Jeffrey C. Stewart  
Mary and Jeffrey P. Tuck in honor of Will and Mary Richeson  
Thomas and Janet Unterman  
Promised Gift from the Collection of Sarelyn Wager  
The Rubin-Ladd Foundation  
Bernard and Wynne Warner  
Michael Yanover  
ZHR Properties, LLC

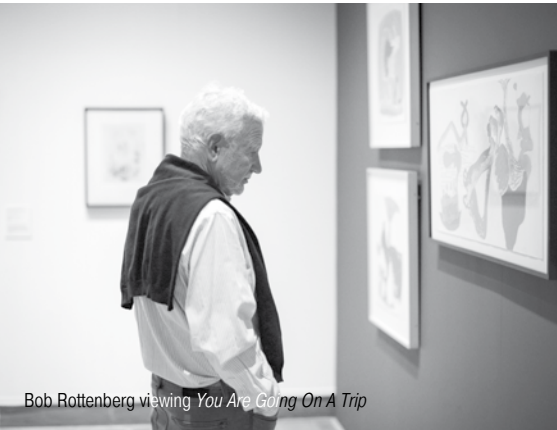


Member Appreciation Weekend

Your membership dues support everything that happens at SBMA—from presenting world-class exhibitions, to delivering innovative and unique programming, to keeping the galleries in top shape. In appreciation of your support, all Members were invited to the Member Appreciation Weekend in June, which included daily prize drawings, free catalogues, and special discounts; and new Members were honored with a reception and gallery tours in July. Thank you for being a part of the SBMA family!



Victoria Cox, winner of one of the daily prize drawings during Member Appreciation Weekend!



Bob Rottenberg viewing *You Are Going On A Trip*



Jill Moore and Jeannie Barbieri-Low



Danelle Coyle and Olivia Gieser



New Member Reception docent tour



Zoltan Puskas enjoys a docent tour.



New Members Mallory Monsma and David Duarte with their guests Ian Monsma and Kristine Faloon

The Museum Contemporaries

The Museum Contemporaries visited the newly opened Marciano Art Foundation and its inaugural exhibition *Unpacking: The Marciano Collection*. This exclusive opportunity included a special tour by distinguished independent curator, Philipp Kaiser, followed by lunch and gallery visits.



Philipp Kaiser



TMC members at the Marciano Art Foundation



FOAA members view handscroll.

Friends of Asian Art

Friends of Asian Art members were invited to a special viewing of a Japanese handscroll painting recently purchased by the Museum, with the help of Friends of Asian Art. The event was held at the home of Trustee Gwen Baker and Henry Baker and included a discussion by Susan Tai, Elizabeth Atkins Curator of Asian Art, on the significance of this exciting new acquisition.



Nancy Schlosser and Maryann Schall



Frank and Lida Light Blue



Michael Porter, Board of Trustees, and Lorie Porter



Margaret Matson, Colette Cosanfino, Marjorie Robertson, and Kristan O'Donnell

Benefactors Circle and Director's Patron Members

Benefactors Circle and Director's Patron Members enjoyed an Argentinian Fiesta held at the Director's Residence. The festive afternoon included culinary favorites such as empanadas and alfajores and performances of Argentine tango and contemporary works, organized by DANCEworks.



Michelle Joanou and Pat Van Every



Performance by Unión Tanguera Cia, Buenos Aires and Lyons

**SBMA Women's Board**  
SBMA Women's Board members hosted Celebremos!, an event celebrating Frida Kahlo held for prospective members and friends. For more information about the Women's Board, contact Karen Kawaguchi at 884.6428 or [kkawaguchi@sbma.net](mailto:kkawaguchi@sbma.net).



Christine Holland, Jill Bishop, and Elaine Gray



Lady Ridley-Tree and Deanna Major



# Spotlight on: SBMA’s Loyal Travelers



On September 7, SBMA’s Travel Program held a “celebration of travel” and honored their loyal travelers, including Lorna Hedges, who has been on 32 tours with SBMA. Her first tour was to India in 1987 and her most recent was to Ashland for the Oregon Shakespeare Festival this past September. “They all have been absolutely wonderful,” Lorna says about her Museum adventures. Frank Whiting has also been on over 30 tours, including many with his family.



## Traveler Notes

### New York City

*“This was the trip of my life. It was absolutely delicious. It was such an immersion into the arts of New York. That first morning at the Met Conservation Department knocked me out and then it just got better and better. I fell into the art. It was an unforgettable, educational, and personal experience and I can’t wait until the next one.”*  
—Donnovan Field

*“Masterfully planned. We got to see all that we wanted and the ‘behind the scenes’ events were things we couldn’t have seen on our own.”* —Penny and Wayne McCall

### Low Countries

*“Susie and Nigel are the dream team. The success of these trips is due in no small part to Susie’s considerable skill and experience! Some days I felt as if I were driving through a 17th-century Dutch landscape painting—cloud-filled skies joining flat land—the paintings came to life. The tour was lovely, start to finish!”* —Gwen Baker

*“Everything was 5 star—I was really impressed and happy! Friends said how great traveling with SBMA is, and now I know it is also!”* —Gabrielle Davis

### Baltic

*“After this trip, I’m not going to travel with anyone else.”* —Charlie Gallagher

*“Even though there were other organizations aboard the cruise ship, we felt like we had a lot that the other groups didn’t. We had that personalized touch. It really makes a difference. Other groups ask about it and I think that they want to be a part of it. We also had a great group dynamic.”* —Erica Wyner

## Upcoming Tours

SBMA offers an array of cultural travel opportunities with a special focus on art, architecture, and gardens.

- **Prague to the Swiss Alps: Danube, Main & Rhine Rivers aboard *Royal Crown***  
October 12 – 26, 2017
- **Pearls of Southeast Asia from Hong Kong to Saigon aboard *M.S. L’Austral***  
October 18 – 28, 2017
- **Art Destinations from Crystal Bridges to Marfa with SBMA Curator Julie Joyce**  
November 2 – 8, 2017 **waitlist only**
- **The Colonial Heart of Mexico: San Miguel de Allende, Morelia, and Guanajuato with Florencio Moreno**  
November 30 – December 9, 2017 **waitlist only**  
January 29 – February 7, 2018 **waitlist only**
- **Mexico City featuring Zona Maco Contemporary Art Fair with SBMA Curator Julie Joyce**  
February 7 – 11, 2018 **waitlist only**
- **Across India: Beyond the Golden Triangle**  
February 17 – March 1, 2018
- **Across India: In the Footsteps of the British Empire**  
February 28 – March 15, 2018
- **Dallas & Fort Worth with SBMA Curator Charles Wylie**  
April 17 – 21, 2018
- **Art Destinations from Marfa to Crystal Bridges**  
April 21 – 27, 2018
- **Spain and Portugal under Sail: From Malaga to Bilbao aboard *Sea Cloud II***  
May 17 – 29, 2018
- **Art, Culture & People in Barcelona: A Value Tour**  
May 31 – June 8, 2018
- **Nordic Magnificence: A Value Tour to Copenhagen, Oslo, and Bergen**  
June 10 – 20, 2018
- **British Architecture, Literature, and Masterpiece Theatre: the English Country House**  
June 13 – 24, 2018
- **European Coastal Civilizations: A Voyage from Lisbon to London aboard *Le Laperouse***  
September 4 – 13, 2018

NOTE: This schedule is subject to change. Visit [www.sbma.net/travel](http://www.sbma.net/travel) for the most up-to-date information and full brochures on many of these tours.

Travel is a benefit of Museum membership.

Members at the Collectors’ Patron level (\$500) and above receive advance notice about SBMA-customized tours.

For more information, please contact 805.884.6436, [travel@sbma.net](mailto:travel@sbma.net), or visit [www.sbma.net/travel](http://www.sbma.net/travel).



# Shopping at the Museum Store



Saturday, November 18  
1 – 4 pm  
**New Design Release +  
Trunk Show with Mara  
Abboud**



Wednesday,  
November 29  
5 – 8 pm  
**La Arcada  
Holiday Walk**  
The Museum Store  
hosts a custom jewelry  
workshop with local artist  
Jules by the Sea.

Museum Store Hours • Saturday – Monday 11 am – 5 pm • Tuesday – Friday 10 am – 6 pm • Thursday Evenings 5 – 8 pm

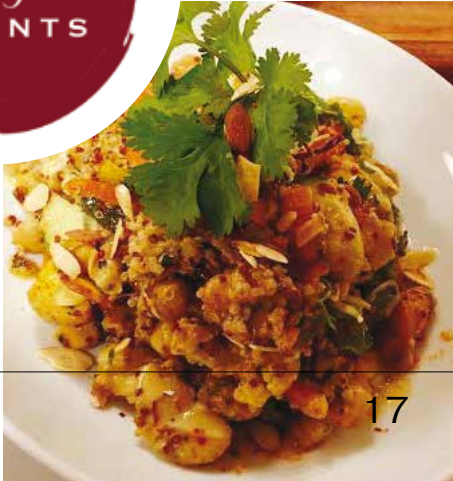
## Museum Cafe

Experience new flavors and colors in the fall menu at the Museum Cafe!

- Citrus thyme roasted beet salad with organic field greens, honeyed goat cheese, house candied walnuts, and charred orange vinaigrette
- Bombay bowl with garlic toasted quinoa, turmeric roasted vegetables, fresh mint, coriander, and slivered almonds, tossed with a coconut yellow curry sauce

To order by phone, call 884.6487.

Museum Cafe Hours  
Tuesday – Sunday, 11 am – 3 pm







SANTA BARBARA MUSEUM OF ART  
1130 State Street, Santa Barbara, CA 93101

Nonprofit Organization  
U.S. Postage  
**PAID**  
Santa Barbara CA  
Permit Number 352

**MUSEUM HOURS**  
Tuesday – Sunday  
11 am to 5 pm  
Free Thursday Evenings 5 to 8 pm  
Closed Mondays  
805.963.4364

**ADMISSION**  
• \$10 adults, \$6 seniors, students with ID, and children ages 6 – 17  
• SBMA Members and children under 6 free  
• Santa Barbara County students (K – college) free  
• Santa Barbara County teachers (K – 12) free  
• Active U.S. military and families free

**OFFICE HOURS**  
Monday – Friday  
9 am to 5 pm

**MUSEUM STORE**  
Saturday – Monday  
11 am to 5 pm  
Tuesday – Friday  
10 am to 6 pm  
Thursday Evenings  
5 to 8 pm

**MUSEUM CAFE**  
Tuesday – Sunday  
11 am to 3 pm



■ oct | nov | dec | 2017

Cover: Valeska Soares, *Vaga Lume* (detail), 2006.

*Krishna Slaying Demons and Rescuing Cows as Balarama Watches*, illustration from a Bhagavata Purana, India, Himachal Pradesh, ca. 1850-60. Ink and color on paper. SBMA, Gift of the Joseph B. and Ann S. Koepfli Trust.

© 2017 Santa Barbara Museum of Art



www.sbma.net