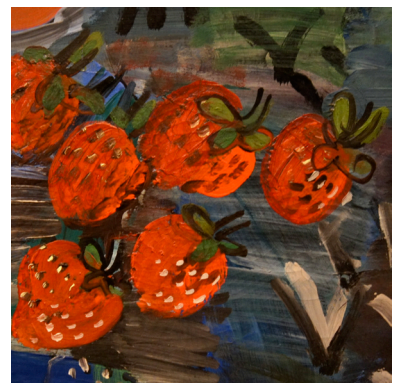
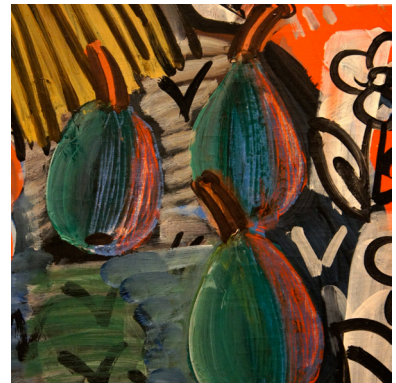


Packing for a Picnic

Scavenger Hunt Activity

Imagine you and your family or friends are planning a picnic. **What will you have to eat?** Your job is to pack your picnic basket with foods selected from the details below taken from works in the Museum's collection. **Is anything missing?** If so, draw what you didn't find in these works of art but that you very much want to include in your lunch!

When you have packed your picnic basket with everything you might want, imagine where would make the best picnic spot. **Do you want shade or sun? Quiet or busy? Would a cow be a nice companion or would you rather be by a bubbling stream?** Anything is possible in your imaginary feast!



Sketch your picnic foods in the basket!

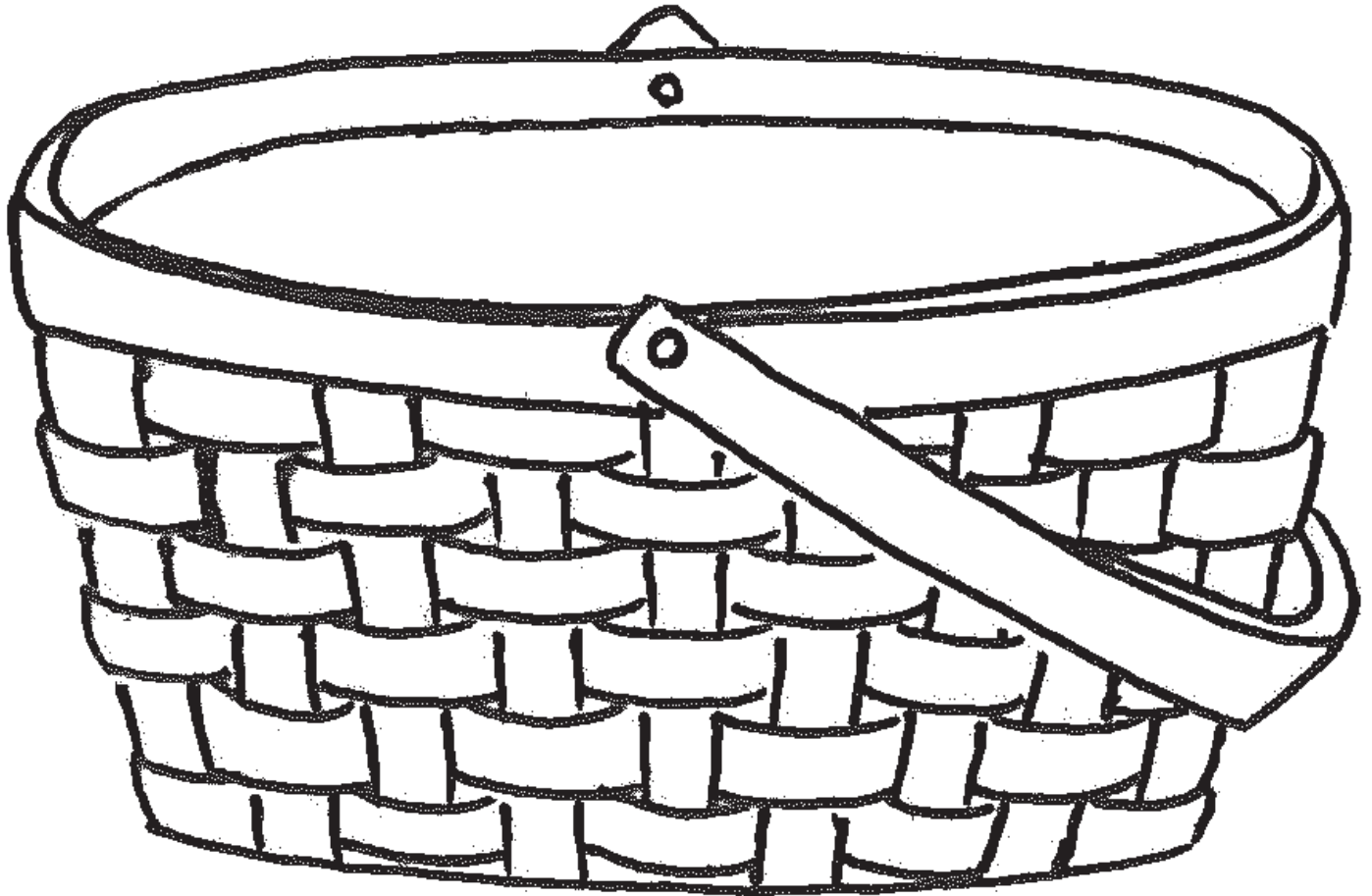


Image Credits: Raoul Dufy, *Composition* (detail), 1926. Oil on canvas. SBMA, Museum purchase with funds from the bequest of Mrs. Alfred B. Clark. Roy Lichtenstein, *Untitled (Sandwich and Drink)* (detail), 1964. Screenprint. SBMA, Gift of Mrs. Donald Bear to the Donald Bear Memorial Collection. Marsden Hartley, *Still Life* (detail), ca. 1929 -30, Oil on cardboard. SBMA, Gift of Wright S. Ludington. Jo Ann Callis, *Raven and Strawberry Cake* (detail), 1980. Ektacolor print. SBMA, Gift of Gay Block. Andre Derain, *Vase of Anemones* (Vase d'Anemones) (detail), n.d., Oil on canvas. SBMA, Gift of Mary and Leigh Block. David Halliday, *Cantaloupe/Grapes* (detail), 1997. Sepia-toned gelatin silver print, ed. 17/25, printed 1999. SBMA, Gift of Arthur Steinman. John Dugdale, *Three White Peaches* (detail), 1999. Blue-toned photogravure, ed. 52/150. SBMA, Gift of Arthur B. Steinman.